



# **MAESTEG SCHOOL**



**MOTIVATED  
TO STRIVE**

**POST 16 OPTIONS**

# ***Welcome to Maesteg Sixth Form***

---

We are a vibrant and popular sixth form that is committed to providing an outstanding education for our students. We are highly successful at ensuring that our students attend the top universities, even supporting them to apply for places at Yale and Harvard in previous years. Students who wish to pursue degree apprenticeships have been employed by companies such as Siemens and Jaguar/Landover. The decision to remain in further education whether at school or at college has many advantages and will prove to be a lifelong investment. The positive relationships that have already been fostered with many of our students ensure that we can offer bespoke guidance and tailored support to all. Each student is valued and supported whether they choose to continue their studies in university, follow an apprenticeship or enter the world of work at 18.

We work in partnership with all stakeholders to ensure the very best for the students in our care. We foster a supportive environment where students are encouraged to work hard and contribute to the wider life of the school community. Sixth form students are ambassadors for our school and embody our school motto “Motivated to Strive”.

Please read the sections below which outline each aspect that makes our sixth form unique.

## ***Curriculum Offer***

We offer a wide range of level 3 courses to suit a variety of interests and aspirations. Our curriculum ensures that every student is offered the opportunity to succeed. We are responsive to demand for new subjects and work in collaboration with our local Bridgend schools and college in order to provide a breadth of subjects and experiences for all. Where subjects are delivered in collaboration and learning takes place on an alternative site, transport is provided for students. Blended learning is also utilised for these purposes and students will be given their own Chromebook to ensure this is possible.

## Teaching and Learning

Teaching and learning is at the heart of everything we do at Maesteg School. As a 6th form student, you are encouraged to develop a growth mind-set attitude to challenge yourself in your studies and motivate yourself to work hard. Lessons will be engaging and challenging and will aim to develop your subject knowledge, skills and independent learning. In the sixth form, your relationships with your teachers will be a learning partnership based on mutual respect where you will be responsible for your own learning to meet the demands of study at level 3. You are also encouraged to use your time effectively outside the classroom and will have dedicated 'Study Sessions' built into your timetable to allow for research, wider reading and independent study. We benefit from dedicated sixth form facilities, which include the sixth form conference room, quiet study areas and a separate café with full access to WiFi. All sixth form students are given a Chromebook to aid their learning. Teachers who can offer academic and pastoral support, supervise all study areas.

## Advanced Skills Baccalaureate Wales

All students at Maesteg Sixth Form study the Advanced Skills Baccalaureate Wales. Formally the Advanced Skills Challenge Certificate, part of the Advanced Welsh Baccalaureate. This qualification unique to Wales, is valued by universities and employers alike as it is evidence of a student's attitude to independent study and their ability to research an area of interest outside of the curriculum. The Independent Project element is widely used by university admission boards such as Cambridge to determine a student's university offer. The qualification is equal to an A level and at Maesteg, our students achieve excellent results of which we are incredibly proud. Students will gain skills in areas such as report writing, producing CV's, giving professional presentations, academic referencing, real life budgeting and finance. Our specialist teachers ensure that all students receive the necessary support and guidance to achieve their potential and beyond.



# ***Support and Guidance***

---

We are committed to supporting you with planning for life after sixth form, whether you choose to go on to university, take up an apprenticeship or enter employment. We recognise the importance of providing you with a bespoke package of support to help broaden your experiences and help give you the competitive edge. Sixth form is an important phase in the journey towards university, the world of work and to growing independence. It is also an opportunity for you to pause, think and plan before committing to the next stage of life. Below is a list of the many ways in which we support you along your individual journey.

A dedicated sixth form Academic and Wellbeing mentor, Mrs Alex Maughan will be there to guide you and ensure that you are on the right path to success.

Form tutors will provide a consistent point of contact for all students at daily morning registration. As they build relationships with you, your form tutor is ideally placed to make valuable contributions to the compilation of references. They will also play a crucial role in maintaining high standards of professional appearance, punctuality and attendance.

- Financial support (EMA). Mrs Alex Maughan will also offer support for applying for the Education Maintenance Allowance.
- Extensive university links with visits and presentations offered across a wide range of subjects.
- Access to UNIFROG. A website detailing all post-18 options in the UK and abroad. It also provides detailed course and apprenticeship information, help for writing personal statements and access to super-curricular courses.
- Assistance with applying for Medicine, such as support with finding medical work placements and UCAT and BMAT entrance exam preparation
- Visits to national student conferences.
- Links to Careers Wales advisors for advice on apprenticeships and further training.
- Support with UCAS applications, job applications, interview preparation etc.
- Alumni links to support with mock interviews and job applications.





NEW COLLEGE  
UNIVERSITY OF OXFORD

## *Oxbridge and The Seren Academy*

**SEREN**

To support our more able and talented learners we offer two programmes of tailored support.

We have been selected as a school to take part in the New College Oxford's prestigious Step-Up programme. Our most able students take part in lectures, webinars and fully funded visits to New College Oxford. This aspirational programme is hugely successful in the sixth form and prepares our students for applications to the best universities in the UK.

Our students are also able to access the Seren Academy. The Seren Academy provides unique opportunities to receive direct advice from university admissions tutors on how to apply to leading universities, develop competitive personal statements, prepare for admissions tests and approach interviews. The Seren Academy invites the brightest and most academically able learners in years 12 and 13 across Wales to join the programme. As part of the programme, learners will take part in a range of interactive activities and study experiences designed to support their learning. Learners will also receive expert guidance to help them make informed decisions as they prepare for university.



# ***Skills Development***

---

## ***Developing leadership skills***

As young leaders, our sixth formers are expected to be role models for our student population. You will play a key role in supporting fundraising events for local and national charities. You will lead community focussed work in conjunction with your studies for the Advanced Skills Baccalaureate Wales. You will also take part in peer mentoring schemes with younger pupils in the school.

In addition, you will have the opportunity to be a part of the Senior Prefect Team. This is a prestigious role and one that includes leading the school council, being an ambassador for the school in assemblies, external events and reporting to governors. The Senior Prefect Team is involved in key decisions made in school in conjunction with the Headteacher. These opportunities help you thrive as part of a school community where you are respected as senior pupils and young adults.

## ***Enrichment***

Life at Maesteg School is more than studying for exams. We believe that you should have the opportunity to develop your interests and discover new aptitudes and skills. All our students are encouraged to participate in our extensive school programme that encourages exploration and making the most of talents in areas of Art, Drama, Sport, STEM, Duke of Edinburgh Award, Teaching and Learning and the opportunity to be a part of our Senior Prefect Team.

Some notable enrichment events in the school calendar are the school shows, sixth form rugby and football



matches and subject specific trips and visits.

## *Independence*

You are an asset to our school and will be treated as such in a high trust culture where we value the fact that you have chosen our school to support you in the next stage of your educational journey. As young adults, you will be challenged to take responsibility for your own learning at Maesteg Sixth Form. You must be prepared to work independently away from the classroom and prepare for the challenges ahead. It is important that you make best use of your study periods and use them to plan for future lessons, read around your subject and consolidate your subject knowledge. Independent study and managing your own workload is essential to success in the 6th form. Attendance to all lessons is vital in order that there are no gaps in your learning.

Choosing to continue your studies at post-16 is a hugely important decision. We believe that our philosophy, passion and commitment to you as our students will provide the very best foundation for the future steps in your learning journey. We are privileged that so many parents entrust their child's future to us, and we value the contribution of each member of our sixth form community.





# Post 16 Options Information

## Overview

### Choosing Your Subjects

Choosing the subjects you want to follow post-16 is an important process. This prospectus is designed to be your first step in this process, giving you the information you need to make the right decisions for you.

On completion of Year 11 your choices are:

- Learn full-time based at Maesteg School Sixth Form.
- Learn full-time based at Maesteg Sixth Form, with the opportunity of studying courses offered by other learning providers in collaboration.
- Learn full-time in college.
- Start training or paid employment with the possibility of pursuing a relevant qualification.

The decisions and choices that you make about what you want to do at the end of Year 11 will have a huge impact on your future. To ensure you have all the facts you need in order to make the right decision, it is essential that you discuss your options with your parents/carers, teachers and our careers advisor.





## Remaining at Maesteg School

Moving from all the subjects that you have been studying at GCSE to four subjects means that you will be spending a considerable amount of time each week on the option subjects that you choose. This is why it is so important that you think carefully about them and have good reasons for these choices. The table below highlights the events taking place over the coming months.

<i><b>Date</b></i>	<i><b>Event</b></i>	<i><b>Details</b></i>
Feb 2023	Sixth form options sessions begin in tutor time	Students to attend options sessions in tutor time. For further information, please see subject pages and year 11 Teams group.
Feb 2023	Sixth Form initial choice application form opens	All initial options to be selected via the online form.
March 2023	Open Evening for parents	Parents are invited to come into school to discuss option choices with teachers and have a tour around the sixth form facilities.
March 2023	Sixth form Interview Process begins	Students and parents will be requested to make an interview appointment with Mrs S Waters or Mr N Jones to discuss programme of study.
June 2023	Sixth form Taster Day	Students will follow a 'day in the life' of a year 12 student and attend year 12 taster lessons in school
24th August 2023	GCSE results day	Maesteg SixthForm application form is opened online for final choices. Students will sign the sixth form contract virtually and complete their online application.

# ***HOW TO APPLY FOR SIXTH FORM***

---

## ***ADMISSIONS PROCEDURE***

Students applying for entry to the Sixth Form should have gained significant success in a number of GCSE subjects, with the expectation that students have achieved a minimum of 5 A\*-C grades and ideally including both GCSE English and Maths.

AS and A2 level syllabuses assume that candidates have achieved a minimum C grade GCSE in their chosen subject if studied in Year 11. For some subjects a minimum of a B grade is required.

Students for entry into Year 12 should note that entry is not automatic on fulfilling the academic requirement above, but also conditional on past behaviour, attitude, and attendance.

Post GCSE results, students will need to complete an online application form. On the form each student will clearly highlight the subjects chosen and grades achieved at GCSE.

Year 12 students will study 4 subjects at AS level, to include the Advanced Skills Baccalaureate Wales

Whilst students should choose 3 AS subjects plus the Advanced Skills Baccalaureate Wales to study in Year 12, some students will have the opportunity of studying 4 AS subjects. This will be discussed upon interview.

Please choose your subject combinations carefully, especially if you have a career in mind that requires specific qualifications to enter University e.g. Medicine, Dentistry, Pharmacy, Engineering. If in doubt, consult your subject teachers or the school careers advisor.

---

## ***ADDITIONAL INFORMATION***

Some subjects have strict limitations on the numbers of students they can accommodate on a course. In the case of a subject not attracting a sufficient number of students to make a viable sized class, the difficult decision not to run the course may need to be taken. Another subject choice may be chosen.

### ***Entry to Year 13 for A2 Study***

Entrance into Year 13 is not automatic. Good attendance, a positive attitude to learning and success at AS level are essential pre-requisites for entry into Year 13.

## ***FURTHER INFORMATION***

### ***OTHER LEARNING PROVIDERS***

Some of you may wish to continue to study at Maesteg Sixth Form but also attend a collaboration course run in either Bridgend College or other local schools. This course will be run in conjunction with your subject choices at Maesteg. Please see the table on the next page for our collaboration and twilight courses.





# COLLABORATION & TWILIGHT

## FURTHER INFORMATION

### OTHER LEARNING PROVIDERS

Collaboration courses will be run in conjunction with your subject choices at Maesteg. Your lessons will take place in Bridgend College or another local school. Transport is provided.

Twilight courses are run over 2 evenings per week and will be a mix of face to face learning in Bridgend College and online lessons. Transport is also provided for free from Maesteg School to Pencoed Steam Academy. The table below shows all the courses available.

COLLABORATION	TWILIGHT
Collaboration courses are run in Bridgend college and/or a school in Bridgend area – 2 afternoon sessions per week.	Twilight courses are run after school, 4-6pm in Bridgend College – 2 sessions per week.
<p>Courses offered across the Bridgend Learning Partnership (Level 3 courses) (Subject to confirmation from other learner providers)</p> <ul style="list-style-type: none"><li>• Computing</li><li>• Economics</li><li>• Government &amp; Politics</li><li>• Public Services</li><li>• Tourism</li></ul>	<p>Twilight courses (Level 3, subject to confirmation from Bridgend College)</p> <ul style="list-style-type: none"><li>• Dance</li><li>• Film studies</li><li>• Further Maths</li><li>• Law</li><li>• Criminology</li><li>• Esports</li></ul>

N.B. Courses are subject to change in accordance to numbers. For more information, please visit the Bridgend Pathways online prospectus at <https://www.bridgendpathways.co.uk/en/>

# SUBJECT CHOICES

## OPTIONS CURRICULUM

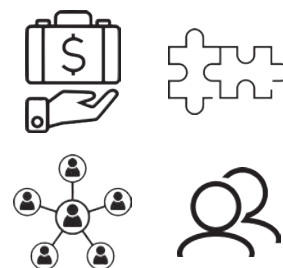
In the following pages of the prospectus, you will find information on the courses which are available at Maesteg School's Sixth Form. Please read each page carefully, even if you think you have made up your mind. Please be reminded that the Advanced Skills Baccalaureate Wales is compulsory for all students in addition to their option choices.

These subjects will be presented in 4 option blocks and you will have to choose one subject only from each of the option columns (max of 4). Some of the subjects, which prove to be popular, will appear in more than one block. We will try to ensure that the blocks allow you access to the three subjects you most want to choose but please be aware that low numbers may mean that subjects can also be removed.

The following subjects are offered at Maesteg Sixth Form:

<b><i>Business</i></b>	<b><i>Art &amp; Design</i></b>	<b><i>Photography</i></b>
<b><i>Textiles</i></b>	<b><i>3D Design</i></b>	<b><i>Biology</i></b>
<b><i>Chemistry</i></b>	<b><i>Drama</i></b>	<b><i>Engineering</i></b>
<b><i>English Literature</i></b>	<b><i>French</i></b>	<b><i>Geography</i></b>
<b><i>Health and Social Care</i></b>	<b><i>History</i></b>	<b><i>Applied ICT</i></b>
<b><i>Mathematics</i></b>	<b><i>Music</i></b>	<b><i>Physics</i></b>
<b><i>Religious Studies Ethics &amp; Philosophy</i></b>	<b><i>Sport and PE</i></b>	<b><i>Media</i></b>
<b><i>Psychology</i></b>	<b><i>Welsh</i></b>	<b><i>Food &amp; Nutrition</i></b>
<b><i>Sociology</i></b>	<b><i>Tourism</i></b>	<b><i>Medical Science</i></b>




# ADVANCED SKILLS BACCALAUREATE



## WJEC CBAC

The Advanced Skills Baccalaureate Wales qualification is an exciting new Level 3 qualification awarded that supports learners to become effective, responsible, and active citizens ready to take their place in a sustainable global society and in the workplace.

### Assessment

<i>The Advanced Skills Baccalaureate Wales qualification is made up of three units referred to as Projects</i>	
	The Global Community Project supports learners to develop and demonstrate application of the Integral Skills whilst considering complex global issues and participating in local community activities (at least 15 hours) to promote citizenship in a sustainable world and Wales.
	The Future Destination Project supports learners to develop and demonstrate application of the Integral Skills whilst exploring future destination goals for life, employability and citizenship in a sustainable world and Wales.
	The Individual Project enables learners to develop and demonstrate application of the Integral Skills whilst planning, managing and conducting an independent research project (extended written project or artefact).

### Progression and Career Opportunities

This qualification allows you to develop important skills that you can take forward whether you are moving on to university, training or employment. Developing these skills will help you become an effective, responsible and active citizen and can have a profound effect on your future success and wellbeing.

### What Skills Will I Develop?

You will develop a range of skills which are attractive to employers, colleges and universities including:

#### Integral Skills

Planning and Organisation  
Critical Thinking and Problem Solving  
Creativity and Innovation  
Personal Effectiveness

#### Embedded Skills

Literacy, Numeracy & Digital Competence



# ART & DESIGN



## AS & A LEVEL ART & DESIGN

Art and Design will help pupils to express their ideas and creativity through a wide range of media, which focuses on their strengths. Pupils will have an understanding of how to develop their work in different ways, using artists for inspiration to create a unique and personal outcome.

At AS pupils will have the opportunity to work with pencil, paint, clay, printmaking, textiles and photography to create their portfolio of work. They will work in a sketchbook and be encouraged to work on a variety of scales.

For A2 they will develop their own work and complete an examination.

### Assessment

<i>AS and A Level in Art and Design</i>	
<ul style="list-style-type: none"><li>AS – Unit 1 (Personal Creative Enquiry) (40%)</li><li>A2 – Unit 2 (Personal Investigation) (36%)</li><li>A2 – Unit 3 (Externally Set Assignment) (24%)</li></ul>	<ul style="list-style-type: none"><li>Pupils will develop skills in a number of different areas of Art, Craft and Design.</li><li>This unit must include written critical and contextual analysis of 1000 words minimum.</li><li>Externally set task is set by the exam board and is in 2 parts. Part 1 - Preparation Study Part 2 - 15hr Exam</li></ul>

### Progression and Career Opportunities

Foundation Art and Design

Degree courses in Art and Design

*"I like drawing and want to develop my use of media before I go onto a Foundation Course."*

# BUSINESS



## WJEC CBAC

This specification introduces learners to the dynamic business environment and the importance of entrepreneurial activity in creating business opportunities and sustaining business growth. Learners will have the opportunity to develop a wide range of essential skills required for higher education and employment.

The focus of the specification is to nurture an enthusiasm for studying business using contemporary contexts, allowing learners to develop an appreciation of the strategic, complex and inter-related nature of business issues from a local to global perspective.

Learners will have the opportunity to develop awareness of contemporary business issues relevant to the Welsh business environment. Learners will need to study the content areas below:

**Enterprise / Business plans / Markets / Market research / Business structure / Business location / Business finance / Business revenue and costs. Marketing / Finance / People in organisations (human resources)**

## Assessment

<b>AS Unit 1: Business Opportunities (15%)</b> Written examination: 1 hour 15 minutes	<b>AS Unit 2: Business Functions (25%)</b> Written examination: 2 hours
Short answer and structured questions.	Data response questions.

## Progression and Career Opportunities

A knowledge of business can lead to a wide variety of career paths. Business can be useful in many different jobs including roles within accountancy, sales, marketing, human resources, manufacturing, customer services and even business management. It will also be useful if you are thinking about setting up your own business or being self-employed in the future.

## KEY TO SUCCESS

**"If someone offers you an amazing opportunity and you're not sure you can do it, say YES – then learn how to do it"**

**- Sir Richard Branson**



## GCE BIOLOGY - WJEC CBAC

Biology is the scientific study of life. The AS and A Level Biology course allows pupils to develop key concepts in Biology. Once these concepts have been developed, pupils then consider the applications of these concepts. Practical skills will be integrated with theoretical topics and assessed separately at A2.

### Assessment

AS / A Level Biology	
<p>AS (2 Units)</p> <p><b>AS Unit 1: Basic Biochemistry and Cell Organisation</b></p> <p><b>Written examination: 1 hour 30 minutes</b> 20% of qualification</p> <p>A range of short and longer structured questions, some in a practical context, and one extended response.</p> <p><b>AS Unit 2: Biodiversity and Physiology of Body Systems</b></p> <p><b>Written examination: 1 hour 30 minutes</b> 20% of qualification</p> <p>A range of short and longer structured questions, some in a practical context, and one extended response.</p>	<p>A Level (the 2 AS units plus a further 3 units.)</p> <p><b>A2 Unit 3: Energy, Homeostasis and the Environment</b></p> <p><b>Written examination: 2 hours</b> 25% of qualification</p> <p>A range of short and longer structured questions, some in a practical context, and one extended response.</p> <p><b>A2 Unit 4: Variation, Inheritance and Options</b></p> <p><b>Written examination 2 hours</b> 25% of qualification</p> <p>A range of short and longer structured questions, some in a practical context, and one extended response.</p> <p><b>A2 Unit 5: Practical Examination</b></p> <p><b>10% of qualification</b></p> <p>This unit comprises two tasks:</p> <ul style="list-style-type: none"><li>- Experimental Task (20 marks)</li><li>- Practical Analysis Task (30 marks)</li></ul>

### Progression and Career Opportunities

AS/A2 Biology leads into a number of Biology based courses at university.

Potential careers related to Biology include Medicine, Veterinary Science, Physiotherapy, Genetic Engineering, Biotechnology, Pharmacy, Pharmacology and many, many more...

*"AS Biology is both challenging and interesting and I am pleased that I have taken it."*



# CHEMISTRY



## GCE CHEMISTRY - WJEC CBAC

The A level Chemistry course encourages candidates to understand that chemistry is concerned with the exploitation of the Earth's resources in the production of energy and new materials by the control and use of chemical reactions. Understanding the behaviour of materials allows chemists to design new materials for specific uses. In these respects, chemistry plays a vital role in providing an enhanced quality of life.

### Assessment

<b>AS / A Level Chemistry</b>	
<b>5 units in total. Weightings are expressed as % of the full A level qualification.</b>	
<b>AS Unit 1</b> The language of Chemistry, Structure of Matter and Simple Reactions Written examination: 1 hour 30 minutes 20% of qualification Short answer questions, structured and extended answer questions.	<b>A2 Unit 3</b> Physical and Inorganic Chemistry Written examination: 1 hour 45 minutes 25% of qualification Short answer questions, structured and extended answer questions.
<b>AS Unit 2</b> Energy, Rate and Chemistry of Carbon Compounds Written examination: 1 hour 30 minutes 20% of qualification Short answer questions, structured and extended answer questions.	<b>A2 Unit 4</b> Organic Chemistry and Analysis Written examination: 1 hour 45 minutes 25% of qualification Short answer questions, structured and extended answer questions.
	<b>A2 Unit 5 Practical examination</b> 10% of qualification

### Progression and Career Opportunities

This course provides a foundation for the study of Chemistry, Medicine, Biochemistry, Molecular Biology, Chemical Engineering, etc. It also provides a satisfying course of study for those who do not wish to study the subject further.

"Every aspect of the world today – even politics and international relations is affected by chemistry." - Linus Pauling

# DRAMA & THEATRE STUDIES



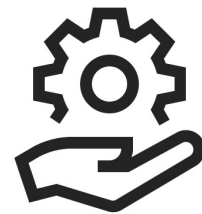
## WJEC CBAC

AS and A level in Drama and Theatre offers a practical and challenging course of study which encourages learners to develop a framework for making, performing, interpreting, and understanding drama and theatre. Students will understand the practices used in twenty-first century theatre making. They will also understand and experience the collaborative relationship between various roles within theatre. Students will analyse and evaluate their own work and the work of others. Students can be assessed on either acting or design:

### Assessment

<b>AS Year 12</b> <b>AS Unit 1: Theatre Workshop</b> <ul style="list-style-type: none"><li>• 24% of qualification 90 marks</li><li>• Non- exam assessment: internally assessed, externally moderated.</li><li>• Learners participate in the creation, development and performance of a piece of theatre based on a reinterpretation of an extract from a text.</li><li>• The piece must be developed using the techniques and working methods of an influential theatre practitioner or recognised Theatre Company.</li><li>• Learners must produce- a written log book and evaluation.</li></ul>	<b>A2 Year 13</b> <b>Unit 3- Text in action</b> <ul style="list-style-type: none"><li>• 36% of qualification 120 marks</li><li>• Non-exam assessment: externally assessed by a visiting examiner</li><li>• Learners participate in the creation, development and performance of two pieces of theatre based on a stimulus supplied by WJEC: a devised piece and a scripted piece.</li><li>• Learners must realise their performance live for the visiting examiner.</li><li>• Learners must produce a written log book and evaluation one week after the performance.</li></ul>
<b>AS Unit 2: Text in Theatre</b> <ul style="list-style-type: none"><li>• Written examination: 1 hour 30 minutes</li><li>• 16% of qualification 60 marks<sup>2</sup></li><li>• Open book: Open book: Clean copies (no annotation) of the complete text chosen must be taken into the examination.</li><li>• A series of questions based on one performance text:<ol style="list-style-type: none"><li>1. Medea, Euripides</li></ol></li></ul>	<b>A2 Unit 4: Text in Performance</b> <ul style="list-style-type: none"><li>• Written examination: 2 hours 30 minutes</li><li>• 24% of qualification 95 marks</li><li>• Open book: Open book: Clean copies (no annotation) of the two complete texts chosen must be taken into the examination.</li><li>• Two questions, based on two different texts:<ol style="list-style-type: none"><li>1. A Day In The Death of Joe Egg - Peter Nichols</li><li>2. Sweeney Todd - Stephen Sondheim</li></ol></li></ul>

The WJEC A level in Drama and Theatre is an exciting and inspiring course, which prepares learners for further study in Higher Education. This highly practical specification provides learners with the opportunity to work as either performers and/or designers.



## BTEC LEVEL 3 NATIONAL EXTENDED CERTIFICATE IN ENGINEERING

The engineering sector continues to suffer from a skills gap and needs to keep up with rapidly developing technologies. The BTEC Level 3 Subsidiary Diploma in Engineering has been designed to give new entrants to the engineering sector the underpinning knowledge and specific skills needed to meet the needs of modern mechanical engineering industries.

The qualification has been developed in the engineering sector to give education and training for learners to achieve a nationally recognised level 3 vocationally specific qualification. This qualification will give full-time learners the opportunity to enter employment in the mechanical engineering sector or to progress to vocational qualifications such as the Pearson BTEC Higher Nationals in Engineering. Learners will have the opportunity to develop a range of skills and techniques, personal skills, and attributes essential for successful performance in working life.

### Assessment

#### Pearson BTEC Level 3 Subsidiary Diploma – 60 credits

Students are expected to build a portfolio of engineering course work throughout the course. This course is equivalent in size to one A Level. It consists of four units of which three are mandatory on one optional. There are two units that are assessed in an examination. In addition, pupils undertake an assignment. (Mandatory content 83% and external assessment 67%). The remaining units are internally assessed and externally verified. Criteria for the course are laid out in student logbook. Each assignment has a list of criteria and tasks, which clearly indicate the work to be completed and the grades that can be achieved.

3 off compulsory units – 300 GLH	Unit 1 - Engineering Principles (Mathematics and science) Unit 2 – Delivery of Engineering Processes Safely as a Team Unit 3 - Engineering Product Design and Manufacture
1 off – selected unit – 60GLH	Unit 10 - Computer Aided Design in Engineering

### Progression and Career Opportunities

Students can use this qualification to enter Higher Education via one of the routes shown below. Alternatively, it can be used to access engineering apprenticeships with local and national employers. HND Higher National Certificate/Diploma, B. Sc. Bachelor Degree, B. Eng Bachelor Degree in Engineering, M. Eng. Masters Degree in Engineering, Engineering employment, Advanced Modern Apprenticeship.

*“At its heart, engineering is about using science to find creative, practical solutions. It is a noble profession.” - Queen Elizabeth II*



# ENGLISH LITERATURE



## WJEC CBAC

If you enjoy reading a wide range of prose, poetry, and drama, and learning about the history and culture in which texts are written, then this is the course for you!

English Literature gives you the opportunity to study the work of the nation's greatest writers, engage in lively debate and develop your skills of analysis.

### Assessment

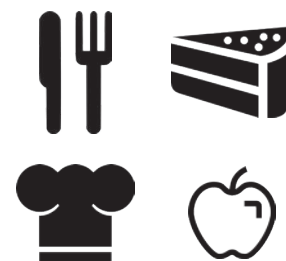
<i>WJEC A Level English Literature</i>	
AS Unit 1: Prose and Drama exam 20% of qualification  AS Unit 2: Post 1900 poetry exam 20% of qualification	<b>Year 12</b>  <b>2 x 2 hour examinations.</b>
A Unit 3: Pre 1900 poetry and unseen poem (exam) 20%  A Unit 4: Shakespeare (exam) 20%  A Unit 5: Prose study Non-Exam Assessment 20%	<b>Year 13</b>  <b>2 x 2 hour examinations</b>  <b>Consisting of essay questions, critical analysis, and comparative analysis.</b>  <b>Controlled Assessment:</b> <b>3000-word assignment based on the reading of two prose texts.</b>

### Progression and Career Opportunities

English Literature A level is a highly respected qualification; the skills of analysis and expression that you develop on the course can lead to a wide range of university courses and careers. Many Literature students have gone on to train as primary and secondary school teachers, and pursue careers in publishing, journalism, and the media. To study English literature at this level, you need a grade B or better in GCSE English Literature and Language.

**"Books are the carriers of civilization. Without books, history is silent, literature dumb, science crippled, thought and speculation at a standstill." - Barbara Tuchman**

# FOOD SCIENCE & NUTRITION



## WJEC CBAC LEVEL 3 DIPLOMA

Level 3 Food Science and Nutrition allow pupils to gain a wealth of knowledge about the food and nutrition industry. Over two years pupils will have the opportunity to learn about the relationship between the human body and food as well as practical skills for cooking and preparing food. There is a strong emphasis on practical work, making this an ideal choice for pupils who prefer learning through doing.

Pupils will be able to consider employment in a range of different industries including the food and drink sectors of hospitality, catering, food production and food retail. The Food Science and Nutrition Diploma is the equivalent of to A Level, and this course complements the work undertaken in many of the A Level subjects offered such as, biology, Physical Education, Food and Nutrition, Humanities, Business & Media studies, and a range of others.

### Assessment

<i>Level 3 Diploma in Food Science and Nutrition.</i>	
<b>Internally assessed:</b> <ul style="list-style-type: none"><li>• Unit 1: Meeting Nutritional Needs of Specific Groups coursework. (25%)</li><li>• Unit 3: Experimenting to Solve Food Production Problems. or</li><li>• Unit 4: Current issues in Food Science and Nutrition (25%)</li></ul>	<b>Externally assessed.</b> <ul style="list-style-type: none"><li>• Unit 1: Meeting Nutritional Needs of Specific Groups. Details of the external assessment are as follows: 90 minute examination; plus 15 minutes reading time (25%)</li><li>• Unit 2 Ensuring Food is Safe to Eat is externally assessed. Details of the external assessment are as follows: An eight hour timed, supervised assessment based on coursework completed within the class. (25%)</li></ul>

### Progression and Career Opportunities

Examples of degree courses include: Food Science & Technology, Public Health Nutrition (Food Science), Hospitality Management, Hospitality, Consumer & Trading Standards, Environmental Health. Career opportunities include: Quality control within food manufacturing, Food scientist, Events Management, Nutritionist, Food Teacher, Restaurant Manager, Chef (with experience), Food Stylist, Home Economist (work for magazines and TV).

*"Everything in Food is Science. The only subjective part is when you eat it." – Alton Brown*



## WJEC CBAC

At AS French, we study a wide variety of topics based on social issues and trends. We will look at travel, entertainment, and music.

At A2 we also study the themes of diversity and difference. In addition, we will study France 1940-1950 which will concentrate on the Occupation and the Post War years.

We also study the language much more in depth, which allows for a greater independence of expression.

## Assessment

GCE FRENCH	
<p><b>AS Unit 1: Speaking</b> Non exam assessment: 12-15 mins (plus additional 15 minutes prep time) <b>12% of qualification</b> <b>48 marks</b> <b>Task 1:</b> Arguing a point of view based on a written stimulus card (5-6 mins) <b>Task 2:</b> Discussion based on a second stimulus card (7-9mins)</p> <p><b>AS Unit 2: Listening, reading, translation and critical response in writing</b>  Written examination: 2 hour 30 mins <b>28% of qualification</b> <b>84 marks</b> <b>Section A:</b> Listening <b>Section B:</b> Reading <b>Section C:</b> Translation <b>Section D:</b> Critical response in writing</p> <p><b>Learners are not permitted to use dictionaries in any part of the assessment at AS &amp; A level.</b></p>	<p><b>A2 Unit 3: Speaking</b> Non exam assessment: 11-12 mins <b>18% of qualification</b> <b>72 marks</b> Independent research project: A) Presentation of independent research project (2 mins) B) Discussion on the content of the independent research project (9-10mins)</p> <p><b>A2 Unit 4: Listening, reading, translation</b> Written examination: 1 hour 45 mins <b>30% of qualification</b> <b>100 marks</b> <b>Section A:</b> Listening <b>Section B:</b> Reading <b>Section C:</b> Translation</p> <p><b>A2 Unit 3: Critical &amp; analytical response in writing (closed book)</b>  Written examination: 1 hour 30 mins <b>12% of qualification</b> <b>40 marks</b> One essay question based on the study of one literary work taken from the prescribed list.</p>

## Progression and Career Opportunities

The study of AS and A level French will allow you to continue the study of French at University as a single honours' qualification. French can also be combined with the study of another language at university. French can also be combined with lots of other subjects such as Business Studies, engineering and can be incorporated into a degree in Medicine. With a degree in French you can expect to earn 20% more than in other disciplines. You could find employment in accounting, IT and Telecommunications, Travel, Logistics, Events Organisation, Engineering, Creative Design and Media, Marketing and PR, Law, Logistics and Transportation not to mention Translation and Interpretation and Teaching.

*"First and foremost, learning French is the pleasure of learning a beautiful, rich, melodious language, often called the language of love. French is also an analytical language that structures thought and develops critical thinking, which is a valuable skill for discussions and negotiations."*



## WJEC CBAC

The WJEC AS and A level in Geography encourages learners to apply geographical knowledge, theory, and skills to the world around them. In turn, this will enable learners to develop a critical understanding of the world's people, places, and environments in the 21st century. Learners should be able to develop both knowledge and understanding of contemporary geographical concepts, together with transferable skills, that will enable learners to progress to higher education and a range of employment opportunities.

The focus of the specification is to develop an enthusiasm for and competence in geography by using contemporary real-world contexts and practical application of geographical skills and techniques in the field. The specification draws on both physical and human geography.

## Assessment

WJEC GEOGRAPHY GCE	
<b>AS Unit 1:</b> Changing Landscapes	Written examination: 2 hours 24% of qualification <b>96 marks</b>
<b>AS Unit 2:</b> Changing Places	
<b>A2 Unit 3:</b> Global Systems and Global Governance	Written examination: 1 hour 30 minutes 16% of qualification <b>64 marks</b>
<b>A2 Unit 4:</b> Contemporary Themes in Geography	Written examination: 2 hours 24% of qualification <b>96 marks</b>
<b>A2 Unit 5:</b> Independent Investigation	Written examination: 2 hours 16% of qualification <b>64 marks</b>
	Written examination: 2 hours 16% of qualification <b>64 marks</b>

## Progression and Career Opportunities

Geography graduates have diverse career destinations and the subject has one of the highest rates of graduate employability. This is on no small part down to the flexibility of Geography and the very wide range of skills it helps you to develop that are particularly attractive to universities and employers alike.

Not all Geography students become Geography teachers or weather presenters on the television! Potential careers related to Geography include cartography (map maker), meteorology (weather forecaster), hydrology and flood management, environmental health, conservation, leisure and tourism, urban planning, aid worker, mining, navigation, surveying, transport services, data analysis, civil service and teaching.

*"Geography is one of those richly comprehensive subjects whose relevance is all around us. More than ever, we need the geographer's skills and foresight to help us learn about our planet. How we use it. How we abuse it." - Michael Palin*



# HEALTH & SOCIAL CARE & CHILDCARE



## WJEC CBAC

This course actively engages students in the processes of Health and Social Care to help them develop as effective independent learners. It encourages students to understand aspects of Health, Social Care and Early-years sectors through investigation and evaluation. It also looks at some of the issues, which affect the nature and quality of human life including an appreciation of diversity, and cultural issues. It allows progression on to a wide variety of subject areas Post 18.

### Assessment

WJEC GCE-HEALTH AND SOCIAL CARE & CHILDCARE	
<p><b>AS Unit 1: Promoting health and well-being</b></p> <p>Written examination: 2 hours 20% of qualification</p> <p>Topic Covered: Definitions and concepts of health and well-being</p> <p>Understanding perspectives of health, well-being and resilience</p> <p>Supporting and promoting health, well-being and resilience in Wales</p> <p><b>AS Unit 2: Supporting health, well-being and resilience in Wales</b></p> <p>Non-exam assessment: approx. 30 hrs 20% of qualification</p> <p>Topic Covered: Supporting individuals to achieve personal outcomes</p> <p>Working practices within health and social care, and childcare provision</p> <p>Local and national provision</p> <p>Responsibilities and rights of both providers and individuals</p>	<p><b>A2 Unit 3: Theoretical perspectives of children and young people's development</b></p> <p>Written examination: 2 hours 30 minutes 30% of qualification</p> <p>Topic Covered: Theories and principles of child development</p> <p>The importance of play in learning and development</p> <p>Behaviour of children and young people</p> <p>A2 Unit 4: Supporting the development, health, well-being and resilience of children and young people</p> <p>Non-exam assessment: approximately 40 hours 30% of qualification</p> <p><b>Topic Covered:</b> <b>Children and young people's needs</b></p> <p>Contemporary issues in providing care and support for children and young people</p> <p>The role of current legislation and government initiatives to safeguard and improve the care and support for children and young people in Wales</p>

The subject is interesting, varied, diverse, and covers many different areas of Health Social care and early year's settings. It will also provide a range of competencies, techniques, personal skills and attributes for working in this field. Learners will be encouraged to seek work placements to practically apply the knowledge, information and skills developed during the course. This subject develops the skills that underpin the characteristics needed for those who aim to work in varied sectors including nursing, teaching, social work and health care practitioners.



## WJEC CBAC

The AS and A2 history course develops understanding of the political, social, economic and cultural factors that have affected the world we live in. The AS course looks in depth at the Weimar period of German history through source work, as well as the development of government and politics in Britain in the 18th and 19th Century.

At A2 level, the studies focus on the Nazi era in Germany and the development of the USA between 1890 and 1990, focusing on the fight for Civil Rights and the USA's position as a world superpower.

## Assessment

<i>WJEC History GCE</i>	
<b>Unit 1 – POLITICS, PROTEST AND REFORM IN WALES AND ENGLAND c.1780-1880</b>	Written examination: 1 hour 30 minutes
<b>Unit 2 – WEIMAR AND ITS CHALLENGES c.1918-1933</b>	Written examination: 1 hour 45 minutes
<b>Unit 3 – THE AMERICAN CENTURY c.1890-1990</b>	Written examination: 1 hour 45 minutes
<b>Unit 4 – NAZI GERMANY c.1933-1945</b>	Written examination: 1 hour 45 minutes
<b>Unit 5 – INDIVIDUAL INVESTIGATION</b>	Coursework

## Progression and Career Opportunities

Going onto University to study History has many advantages. It is a myth that the only careers open to historians are teaching, working in a museum or further research. History graduates find employment in almost any job sector due to the wide range of transferable skills developed during their studies, including teaching, law, media and publishing, local and national government, investment banking, consultancy, and accountancy.

*"The A Level History course is really interesting. It builds upon our existing knowledge and extends it by looking at new events, people and periods of time." - Calum Puddy*

# APPLIED ICT DIGITAL TECHNOLOGY



## WJEC CBAC

The qualification enables learners to develop a deep understanding of how innovations in digital technology, and the increasing levels of connectivity between them, impact the lives of those who use them and the wider society. Learners will develop:

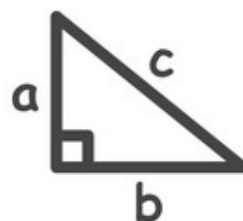
- Identifying problems
- Developing solutions
- Meeting the needs of the user
- Understanding the role that technology plays in society

## Assessment

<i>WJEC GCE AS / A Level in Digital Technology</i>	
<b>AS Unit 1:</b> Innovation in Digital Technology Written examination: 2 hours 20% of qualification On Screen Assessment	Content related to <b>connected digital systems</b> and smart devices, the development of <b>Artificial Intelligence</b> , digital technology development <b>life cycles</b> , user experience and <b>human computer interaction</b> in digital systems development.
<b>AS Unit 2:</b> Creative Digital Practices Non-exam assessment: Approx 45 hours 20% of qualification.	A non-examined assessment focussing on the end to end creation of a game. Learners will investigate, plan, design, create, test and review a game of their choice.
<b>A2</b>	
<b>A2 Unit 3:</b> Connected Systems Written exam: 2 hours 30 minutes 30% of qualification	A range of questions related to <b>collecting, storing, analysing and using data, cyber security, and digital technology networks.</b>
<b>A2 Unit 4:</b> Digital Solutions Non-exam assessment: Approx 45 hours 30% of qualification	Creation of a transactional website linked to a server-based RDBMS. Candidates will plan, design, create, develop, review, test and refine a transactional website of their choice.

"This is not only the future of our children's education it is the present; we need to make the investment in ICT and Digital Technology now!" - Walter Lockhart

# MATHEMATICS



## WJEC CBAC

The AS course is comprised of one unit of Pure Mathematics and a unit of Applied Mathematics, which develops the type of mathematics seen in Higher tier GCSE.

In Year 13, students complete another course in Pure Mathematics and a module in Applied Mathematics. The course will help students to develop logical thought and develops both reasoning and problem-solving skills much sought after by employers.

## Assessment

MATHEMATICS	
AS Unit 1: Pure Mathematics A Written examination: <b>2 hours 30 minutes</b>  <b>25%</b> of qualification <b>120 marks</b>  AS Unit 2: Applied Mathematics A Written examination: <b>1 hour 45 minutes</b>  <b>15%</b> of qualification <b>75 marks</b>  The paper will comprise two sections: Section A: Statistics <b>(40 marks)</b>  Section B: Mechanics <b>(35 marks)</b>	A2 Unit 3: Pure Mathematics B Written examination: <b>2 hours 30 minutes</b> 35% of qualification <b>120 marks</b>  A2 Unit 4: Applied Mathematics B Written examination: <b>1 hour 45 minutes</b> <b>25%</b> of qualification <b>80 marks</b>  The paper will comprise two sections Section A: Statistics <b>(40 marks)</b>  Section B: Differential Equations and Mechanics <b>(40 marks)</b>

## Progression and Career Opportunities

Mathematics at A level is both challenging and interesting as it builds on the topics that pupils have met at GCSE and develops ideas further. It is particularly suited to people who enjoy problem solving and logical reasoning. It is a highly sought-after qualification in the workplace and in Higher Education.

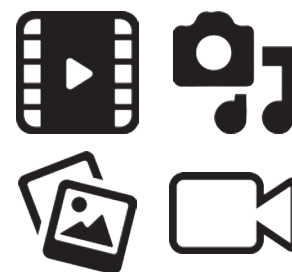
AS maths is a highly useful support for Physics, Geography, Psychology and Sociology.

Careers that list A level maths as essential include Computing, Finance, Medicine, Architecture, Accountancy and Actuary.

**"Maths is useful for everything" – James Pritchard**

**"The is no university that does not like to see maths on your application" – Ewan Thomas Year 13 students**





## WJEC CBAC

This A-level specification offers a broad, engaging and stimulating course of study which offers learners the opportunity to develop a thorough knowledge and understanding of the media and to develop analytical and practical production skills. Pupils study a wide range of media forms and products through the conceptual framework of media, which encompasses media language, representations, media industries and audiences. Pupils also develop practical production skills and apply their knowledge and understanding to media production work in different forms.

## Assessment

<i>As/A Level Media Studies</i>	
<p><b>Year 12:</b></p> <p><b>Unit 1: Investigating the Media</b> Written examination: 2 hours 30 minutes - 24% of the qualification</p> <p><b>Section A: Selling Images</b> – Advertising and Music Video A study of the representation of gender and ethnicity through print and audio-visual advertisements along with contemporary and pre-2000 music videos.</p> <p><b>Section B: News in the Online Age</b> A study of traditional print-based news alongside two news websites and a radio news programme. Pupils will explore audiences' changing relationship with the news.</p> <p><b>Section C: Film Industries</b> – from Wales to Hollywood A study of two films from highly contrasting film industries: the national film industry in Wales and the global Hollywood film industry.</p> <p><b>Section D: Video Games</b></p> <p><b>Unit 2 – Coursework</b> (16% of the qualification) A media production, including individual research and planning, created in response to a choice of briefs set by WJEC.</p>	<p><b>Year 13:</b></p> <p><b>Unit 3: Media in the Global Age</b> Written examination: 2 hours 30 minutes - 36% of the qualification</p> <p><b>Section A: Television in the Global Age</b> An in-depth study of three complete crime dramas. Pupils will explore contemporary political, social and cultural issues.</p> <p><b>Section B: Magazines – Changing Representations</b> A study of three contrasting magazines with different industry and historical contexts and target audiences.</p> <p><b>Section C: Media in the Digital Age – Video Games</b> Pupils will develop a knowledge of video games as an evolving media form. They will focus on textual, industry and audience issues.</p> <p><b>Unit 4 – Coursework (24% of the qualification)</b> Pupils create a cross-media production in two forms for an intended audience, applying knowledge and understanding of the course content.</p>

## Progression and Career Opportunities

After A-level you could go on to study Media at university to further develop your knowledge and understanding. Jobs directly related to a Media degree include: media researcher, music producer, social media manager, television/film producer and digital marketer to name a few! There are also a range of apprenticeships linked to an interest in media studies including: advertising and marketing, website development and media publishing.

# MEDICAL SCIENCE



## WJEC CBAC LEVEL 3 DIPLOMA

The level 3 Applied Diploma in Medical Science is for learners who are interested in careers related to healthcare and medical research. The qualification Covers the key topic areas of health, physiology, and disease, as well as providing the opportunity to study the areas of pharmacology, physiological measurement, clinical testing, and medical research.

In order to achieve the Level 3 Applied Diploma in Medical Science learners are required to Complete 6 units.

### Assessment

Level 3 Diploma in Medical Science	
Unit 1: Human Health and Disease - Externally assessed (25%)	Unit 4: Medicines and treatment of Disease – Internally assessed (25%)
Unit 2: Physiological measurement techniques – Internally assessed (12.5%)	Unit 5: Clinical laboratory techniques - Externally assessed (12.5%)
Unit 3: Medical Science research Methods – Internally assessed (12.5%)	Unit 6: Medical case study - Externally assessed (12.5%)

### Progression and Career Opportunities

The main purpose of the qualification is to provide learners with the knowledge, understanding and skills in key scientific principles to support progress to higher education or employment in areas of Medical science, such as job roles in physiological sciences or clinical laboratory services.

The Level 3 Applied Diploma in Medical Science is supported by a number of Higher Education Institutions including: Bangor University, Bristol University of the West of England, Cardiff Metropolitan University, Swansea University and the University of Chester.



## WJEC CBAC

This specification will:

- Encourage students to be inspired, moved, and changed by following a broad, course of study
- Develop broader life skills and attributes, including critical and creative thinking, emotional awareness, cultural understanding, self-discipline, self-confidence, and self-motivation
- Enable students to engage actively in the study of music
- Develop musical skills and interests, including the ability to make music individually and in groups
- Enable students to understand and appreciate a range of different kinds of music

## Assessment

MUSIC	
<b>Unit 1 – MUSC1</b> <b>Appraising</b> 30% of AS, 15% of A Level 1 hour written examination <b>80 marks</b>	<b>Unit 4 – MUSC4</b> Appraising 20% of A Level 1 hour 30 minutes written examination <b>100 marks</b>
<b>Unit 2 – MUSC2</b> Composing 30% of AS, 15% of A Level Externally Assessed Coursework <b>60 marks</b>	<b>Unit 5 – MUSC5</b> Composing 15% of A Level Externally Assessed Coursework <b>60 marks</b>
<b>Unit 3 – MUSC3</b> Performing: Solo and/or ensemble 40% of AS, 20% of A Level 6-8 minutes <b>80 marks</b>	<b>Unit 6 – MUSC6</b> Performing: A Musical Performance 15% of A Level 10-12 minutes <b>60 marks</b>

## Progression and Career Opportunities

Following on from A Level you could study for a Music degree gives, which you a broad base of skills, general and specific. Music graduates work in a wide range of professions inside and outside music.

Teaching / Administration / Music Librarian / Childcare / Performer / Classroom assistant / Music therapist / Sound technician / Private tutor / Learning support.

One good thing about music, when it hits you, you feel no pain." - Bob Marley

"Music is a higher revelation than all wisdom and philosophy." - Ludwig van Beethoven

# DIPLOMA IN MUSIC PERFORMANCE



## BTEC LEVEL 3 SUBSIDIARY EDEXCEL

This specification will:

- Encourage students to be inspired, moved, and changed by following a broad, course of study
- Develop broader life skills and attributes, including critical and creative thinking, emotional awareness, cultural understanding, self-discipline, self-confidence, and self-motivation
- Enable students to engage actively in the study of music
- Develop musical skills and interests, including the ability to make music individually and in groups
- Enable students to understand and appreciate a range of different kinds of music

### Assessment

MUSIC	
<p>Units that will be covered over the two years:</p> <ul style="list-style-type: none"><li>• Music Performance Techniques</li><li>• Solo Music Performance Skills</li><li>• Working and Developing as a Musical Ensemble</li><li>• Composing Music</li><li>• Music in the community</li><li>• Musical Theatre</li></ul> <p>Each unit is worth 10 credits and is internally assessed and externally moderated</p>	<p>The 60-credit BTEC Level 3 Subsidiary Diploma extends the specialist work-related focus of the BTEC Level 3 Certificate qualification and covers the key knowledge and practical skills required in the appropriate vocational sector.</p> <p>It is broadly equivalent to one GCE A Level.</p> <p>It allows pupils to work independently and as a team and there is some element of choice on the units studied.</p>

### Progression and Career Opportunities

Following on from A Level you could study for a Music degree, which gives you a broad base of skills, general and specific. Music graduates work in a wide range of professions inside and outside music.

Teaching / Administration / Music Librarian / Childcare / Performer / Classroom assistant / Music therapist / Sound technician / Private tutor / Learning support.

**"Where words fail, music speaks." - Hans Christian Andersen**

# PHOTOGRAPHY



## WJEC CBAC

Photography will help pupils to express their ideas and creativity through a wide range of Photographic techniques, which focuses on their strengths.

Pupils will have an understanding of how to develop their work in different ways, using Photographers for inspiration to create a unique and personal outcome.

Pupils will have the opportunity to work with Digital Photography, Photoshop, and Darkroom, to create their portfolio of work. They will work in a sketchbook and be encouraged to work on a variety of scales.

## Assessment

<i>AS &amp; A Level Photography</i>	
<ul style="list-style-type: none"><li>AS – Unit 1 (Personal Creative Enquiry) 40%</li><li>A2 – Unit 2 (Personal Investigation) 36%</li><li>A2 – Unit 3 (Externally Set Assignment) 24%</li></ul>	<ul style="list-style-type: none"><li>Pupils will develop skills in a number of different areas of photography</li><li>This unit must include written critical and contextual analysis of 1000 words minimum.</li><li>Externally set task is set by the exam board and is in 2 parts.</li></ul> <p>Part 1 - Preparation Study Part 2 - 15hr Exam</p>

## Progression and Career Opportunities

- Foundation Art and Design
- Degree courses in Photography and Media

"Photography is fun." - Lewis Richards

"You can express your ideas in a different way." - Caitlin Williams

"I enjoy capturing different moments with my camera." - Alysha Alleyne





## WJEC

Physicists seek to answer the big questions: Can the conditions that existed a few billionths of a second after the Big bang be recreated in the lab? How do fundamental constituents of matter such as quarks and leptons interact? How did the Universe begin? In addition, can we understand what space and time are made of? Studying Physics at Maesteg School, you will:

- Solve problems set in practical contexts.
- Process and analyse data using mathematical skills.
- Develop experimental design and evaluate scientific methods

## Assessment

<i>AS / A Level Physics</i>	
<b>AS Unit 1, 20%:</b> <ul style="list-style-type: none"> <li>• Motion, Energy and Matter.</li> </ul>	<b>90 Minute Written Examination:</b> <ul style="list-style-type: none"> <li>• Externally Assessed.</li> </ul>
<b>AS Unit 2, 20%:</b> <ul style="list-style-type: none"> <li>• Electricity and Light.</li> </ul>	<b>90 Minute Written Examination:</b> <ul style="list-style-type: none"> <li>• Externally Assessed.</li> </ul>
<b>A2 Unit 3, 25%:</b> <ul style="list-style-type: none"> <li>• Oscillations and Nuclei.</li> </ul>	<b>135 Minute Written Examination:</b> <ul style="list-style-type: none"> <li>• Externally Assessed.</li> </ul>
<b>A2 Unit 4, 25%:</b> <ul style="list-style-type: none"> <li>• Fields and Options.</li> </ul>	<b>120 Minute Written Examination:</b> <ul style="list-style-type: none"> <li>• Externally Assessed.</li> </ul>
<b>A2 Unit 5, 10%:</b> <ul style="list-style-type: none"> <li>• Practical Examination.</li> </ul>	<b>90 Minute Experimental Task</b>  <b>60 Minute Data Analysis Task</b> <ul style="list-style-type: none"> <li>• Externally Assessed.</li> </ul>

## Progression and Career Opportunities

A Level Physics leads to Physics, Maths, and Science & Engineering courses at university, as well as Apprenticeships in STEM fields. Science and Engineering graduates have diverse career opportunities and the subject has one of the highest rates of graduate employability. Studying Physics will provide you with a wide variety of transferable skills particularly attractive to universities and employers alike.

Not all Physics students end up working in laboratories! Potential careers related to Physics include electrical, civil, materials, aeronautical and mechanical engineering, meteorology (weather forecasting), Formula 1, computer programming, medicine, optometry, pharmacology, telecommunications, teaching, environmental health, conservation, mining, navigation, surveying, architect drawing, data analysis, civil service, and marine science to name but a few.

"Space is big. You just won't believe how vastly, hugely, mind-bogglingly big it is. I mean, you may think it's a long way down the road to the chemist's, but that's peanuts to space."

- Douglas Adams



## WJEC CBAC

Students will be introduced to historical and current psychological approaches and classic and contemporary research. In addition, there are opportunities to explore psychological controversies and debates. Pupils will also study a variety of research methods used by psychologists including statistical and mathematical analysis to carry out own investigations. Consideration of the ethical issues and implications of psychological endeavours will be emphasised in all aspects of the specification.

### Assessment

<i>AS/A-Level Psychology</i>	
<b>Year 12</b>  AS Unit 1 Psychology Past & Present Written exam 1hr 30  AS Unit 2 Using Psychological Concepts Written Exam 1hr 30	<b>Year 13</b>  A2 Unit 3 Implications in the real world Written exam 2hrs  A2 Unit 4 Applied Research Methods Controlled investigations Written exam 1hr 30

### Progression and Career Opportunities

A Level Psychology is an excellent qualification for entrance to Higher Education, not only for Psychology and other Social Sciences but for those students who wish to follow a career in Related fields such as counselling, criminology, nursing, teaching and human resources. Psychology also combines well with many other subjects such as Biology, Physical Education, English, Mathematics and Sociology.

# RELIGIOUS STUDIES: ETHICS & PHILOSOPHY



## WJEC CBAC

RE AS and A level focuses on Philosophical and Ethical studies as well as the study of Hinduism. You will consider ethical questions such as whether morality is what God commands, whether being a good person is better than just doing good deeds and the extent to which all moral actions are motivated by self-interest. As well as the ethical questions, you will study philosophical concepts such as arguments for the existence of God as well as considering inductive Challenges to religious belief. The Hinduism unit builds on knowledge from GCSE studies and focuses on topics such as key figures, sacred texts, religious life, and practices.

## Assessment

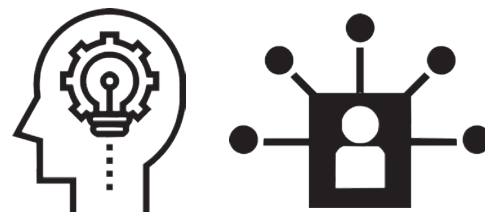
<i>WJEC Religious Studies GCE: AS/A Level</i>	
AS Unit 1 (15%) Introduction to the study of Hinduism	Written examination: 1 hour 15 minutes 60 marks
AS Unit 2 (25%) Introduction to Philosophy Introduction to Ethics	Written examination: 1 hour 45 minutes 120 marks
A Level Unit 3 (20%) A Study of Religion: Christianity	Written examination: 1 hour 30 mins 90 marks
A Level Unit 4 (20%) Religion and Ethics	Written examination: 1 hour 30 minutes 90 marks
A Level Unit 5 (20%) Philosophy of Religion	Written examination: 1 hour 30 minutes 90 marks

## Progression and Career Opportunities

An AS or A2 level in Religious Studies is a stepping-stone to a wide range of future opportunities. This course will be an excellent stepping-stone if you are interested in going on to study Philosophy or Ethics at university. The skills you develop will support you in further studies at university as you meet people from all different cultures. Furthermore, as you enter the world of work, you will be expected to work alongside people with different beliefs than your own. Religious Studies will teach the skills and understanding needed to work with people of all faiths and cultures. These skills are vitally important in all careers especially professions such as the police, retail, teaching, law, caring professions, and armed forces, in fact any profession that brings you into contact with other people.

**"Science investigates; religion interprets. Science gives man knowledge, which is power; religion gives man wisdom, which is control. Science deals mainly with facts; religion deals mainly with values. The two are not rivals." - Martin Luther King Jr**

# SOCIOLOGY



## WJEC CBAC

The study of A level Sociology focuses on contemporary society. Studying sociology fosters the development of critical and reflective thinking, nurturing a respect for social diversity. It provides an awareness of the importance of social structure and social action in explaining social issues. Learners are encouraged to develop their own sociological awareness through active engagement with the contemporary social world and Welsh society. A successful AS/A Level Sociology pupil will:

- Acquire knowledge and a critical understanding of contemporary social processes and social changes
- Appreciate the significance of theoretical and conceptual issues in sociological debate
- understand and evaluate sociological methodology and a range of research methods through active involvement in the research process
- Develop skills that enable individuals to focus on their personal identity, roles, and responsibilities within society
- Develop a lifelong interest in social issues with reference to Wales in particular.

## Assessment

Units	Content	Assessed Skills
<b>Unit 1: Acquiring culture</b>	Section A - The key concepts and processes of cultural transmission, socialisation, and the acquisition of identity. Section B – Families and households, or youth culture	Written examination: 1 hour 15 minutes (15% of A level qualification)
<b>Unit 2: Understanding Society and Methods of Sociological Enquiry</b>	Section A - Methods of Sociological Enquiry Section B - Understanding Society – A choice of education, media, or religion	Written examination: 2 hours (25% of A level qualification)
<b>Unit 3: Power and Control</b>	Power – A choice of crime and deviance, health and disability, politics, or world sociology	Written examination: 2 hours (25% of qualification)
<b>Unit 4: Social Inequality and Applied Methods of Sociological Enquiry</b>	Section A - Applied methods of Sociological enquiry Section B - Social inequality	Written examination: 2 hours 15 minutes (35% of qualification)

## Progression and Career Opportunities

Prospects for a Sociology student include journalism, counselling, education, social work, family support, public services including police and planning. Sociology is widely accepted as a relevant A Level on most degree courses.

The emphasis on skills makes this specification an excellent vehicle for the development of transferrable capabilities which could be utilised by the learner in both academic and professional arenas alike.

**"The first and most fundamental rule is: consider social facts as things." - Emile Durkheim.**

# SPORT COACHING AND DEVELOPMENT



## BTEC LEVEL 3 - EDEXCEL

This is a popular and exciting vocational qualification. As it is a vocational course there is no exam.

Pearson BTEC Level 3 National Extended Certificate in Sports Coaching\* 360 GLH (480 TQT) Equivalent in size to one A Level.

Three units, all of which are mandatory. Mandatory content (100%). This qualification is intended for post-16 learners wanting to progress directly to employment in the coaching and development sector as an assistant coach. When studied alongside other Level 3 qualifications as part of the study programme, it also supports progression to a wide range of higher education courses.

### Assessment

There are no externally-assessed units in this qualification. All units are internally assessed.

Assessment is specifically designed to fit the purpose and objective of the qualification. It includes a range of assessment types and styles suited to vocational qualifications in the sector.

UNIT A	Careers in the Sport and Active Leisure Industry
UNIT B	Health, Wellbeing and Sport
UNIT C	Developing Coaching Skills

### Progression and Career Opportunities

- Teacher
- Rugby Hub Officer
- Coach
- Leisure industry
- Sport and Activity leader
- Sport Analysis



# TEXTILES ART & DESIGN



## WJEC CBAC

Art and Design Textiles will help pupils to express their ideas and creativity through a wide range of textile media, which focuses on their strengths. Pupils will have an understanding of how to develop their work in different ways, using artists and designers for inspiration to create a unique and personal outcome through fashion, interior design or surface pattern.

At AS pupils will have the opportunity to work with a range of different textile techniques and processes to create their portfolio of work. They will work in a sketchbook and be encouraged to work on a variety of scales.

For A2 they will develop their own work and complete an examination.

## Assessment

<i>AS &amp; A Level in Textiles Art &amp; Design</i>	
<b>AS – Unit 1 (Personal Creative Enquiry) 40%</b>	Pupils will develop skills in a number of different areas of Textile design.
<b>A2 – Unit 2 (Personal Investigation) 36%</b>	This unit must include written critical and contextual analysis of 1000 words minimum.
<b>A2 – Unit 3 (Externally Set Assignment) 24%</b>	Externally set task is set by the exam board and is in 2 parts. Part 1 - Preparation Study Part 2 - 15hr Exam

## Progression and Career Opportunities

Foundation Art and Design

Degree courses in Art and Design

"I like being creative"

"I like drawing and fashion and I want to develop my skills before I go onto a Foundation Course"

"I would like to work in a creative industry"



## WJEC CBAC LEVEL 3 DIPLOMA

### What will I study?

The types of tourists and UK tourism destinations  
Tourism employment options within the UK industry  
The motivation for travel and the range and appeal of worldwide tourism destinations  
Marketing campaigns for tourism destinations  
The of external pressures and changing customer needs and expectations  
Developments in transport and technology within the global tourism industry  
Environmental awareness and current issues affecting the global tourism industry  
The planning of tourism events and the development of itineraries for UK tours  
The nature of UK inbound and domestic tourism

### Assessment

#### Level 3 Diploma in Tourism

The WJEC Level 3 Applied Diploma in Tourism is made up of four units (360 GLH: two Certificate units plus two further units). All units are mandatory.

**Unit 1:** The United Kingdom Tourism Product (External) (Certificate and Diploma)

**Unit 2:** Worldwide Tourism Destinations (Internal) (Certificate and Diploma)

**Unit 3:** The Dynamic Tourism Industry (External) (Diploma)

**Unit 4:** Event and Itinerary Planning (Internal) (Diploma)

The following units will be externally assessed:

**Unit 1:** The United Kingdom Tourism Product

**Unit 3:** The Dynamics of Tourism

Details of the external assessment are as follows:

90-minute examination total of 75 marks short and extended answer questions, based on applied contexts

The following units are internally assessed:

**Unit 2:** Worldwide Tourism Destinations

**Unit 4:** Event and Itinerary Planning

# 3D DESIGN



## WJEC CBAC

This course consists of Designing three-dimensional products that are functional in addition to the Fine Art sculptural qualities of making.

3D Design would be expected to cover some or all of the following:

- Using a variety of materials including plastic, metal, wood and card.
- Broad range of skills, methods of realising intentions.
- Following the design process through inception and intention.
- Various processes to finished product.
- Undertaking research (notes, drawings, photographs, relevant material).
- Drawing in perspective.
- Matching ideas to materials and processes.

Making consumer products designed for industrial production

## Assessment

### *WJEC Art & Design – Three Dimensional Design*

The AS represents the first year of a two year A level qualification but it can be studied separately. It consists of **one** unit:

- Unit 1: Personal Creative Enquiry (40% of A level), internally assessed, externally moderated.

The A level consists of the AS Unit 1 plus **two additional** units:

- Unit 2: Personal Investigation (36% of A level), internally assessed, externally moderated.
- Unit 3: Externally Set Assignment

## Progression and Career Opportunities

Career Prospects: A course in Design cannot only be regarded as a means to developing a career in this area but as a way of achieving an AS/A2 to enable entry onto other courses, university or the world of work.

*“Design is intelligence made visible.” - Alina Wheeler*



## WJEC CBAC

In Welsh, the purpose is to develop pupils' communication skills, in both written and spoken Welsh. It is intended to develop their ability to use language imaginatively. A wide range of reading is encouraged as well as thorough learning of specific literary works/films and dramas. The ability to respond to literature and contemporary multimedia cultural materials are promoted in order to gain an appreciation of Wales's cultural heritage.

### Assessment

WELSH	
<b>UNIT 1 (2020U1): Film and Oracy</b> 15% of the qualification 60 mark Part A discuss film Part B personal response <b>UNIT 2 (2020U2): Written Coursework</b> 10% of the qualification 60mark <b>UNIT 3 (2020U3): The Use of Language and Poetry</b> 15% of the qualification 120 mark Part A: A Composite question which contain different types of linguistic exercises. Part B: 3 questions based on the set texts. <b>UNIT 4 (1020U4): Drama and Oracy</b> 25% of the qualification 75 mark Part A: Byw yn Gymraeg. Living Welsh Part B: Discuss Drama. Part Personal response. <b>UNIT 5(1020U5): : Welsh in the Society and Translanguaging</b> 15% of the qualification 80 marc Part A: Welsh in the Society – questions based on the set texts. Part B: Trawsieithu – written response in Welsh to an English Article. Synoptic Assessment <b>UNIT 6 (1020U6):: The Use of Language + The Short Story</b> 20% of the qualification 100 marc Part A: A Composite question which contains different types of linguistic exercises. Part B: 2 questions based on 1 of the set texts and 1 Synoptic Question.	Part A approx. 20 mins for each group Part B approx 5 mins for each candidate  <b>WRITTEN COURSEWORK</b> (3 extended written pieces totalling between 1,500 a 2,000 words). <b>WRITTEN EXAMINATION</b> <b>(2 Hours)</b>  Part A +B approx. 30 mins for each group Part C approx 5 mins for each candidate  <b>WRITTEN EXAMINATION</b> <b>(2 hours)</b>  <b>WRITTEN EXAMINATION</b> <b>(2 hours)</b>

### Progression and Career Opportunities

The study of AS Welsh and A level Welsh provides a suitable foundation for the study of Welsh Second Language or a related field, by means of a range of Higher Educational courses (e.g. university degree) or direct entry into employment e.g. Law, banking, Police, NHS, Media, Marketing Interpretation and Teaching . In addition, it provides a coherent, satisfying, and worthwhile course of study for pupils who do not progress to further study in this subject.

*"By choosing to learn Welsh you can impress your friends with your ability to speak another language. You'll challenge your mind, enhance your CV, improve your job prospects and keep yourself entertained for years to come."*

---

***MORE THAN JUST A SIXTH FORM.***

***#ROLEMODELS***

***WE LOOK FORWARD TO WELCOMING YOU IN SEPTEMBER!***



***#MOTIVATED TO STRIVE***

