



*Help Your Child Through GCSEs*

*Year 11*



# *Mr. Davies - Intro*

---

- *Wellbeing*
  - *Teams & Blended Learning*
  - *Homework*
  - *Chromebooks*
  - *PPE*
  - *Tutors*
- 
- *Community Drop-In every Wednesday 12pm-2pm in Caerau Community Centre with Mrs. Alison Davies (07813 956115)*



*Year 11 –  
GCSE English  
Language*

# Course Overview

---

- *English Language GCSE focuses on the skills needed to communicate with others.*
- *Throughout this course, students will work on developing their knowledge and skills in:*
- *Writing with an accurate and engaging style.*
- *Adapting language to suit audience and purpose.*
- *Reading and responding to a wide range of fiction and non-fiction.*
- *Speaking and listening in a range of contexts, to communicate points of view.*

# Course Overview

## Non-Examination Assessment

### Unit 1: Oracy 20%

- Individual presentation
- Group Discussion

### 2 x 2-hour examinations

In each, you will need to show understanding of a range of written texts. There will be a variety of short responses and extended response questions.

**Unit 2:** External Assessment - Description, Narration & Exposition 40%

**Unit 3** External Assessment - Argumentation, Persuasion and Instructional 40%



# Key Dates

---

- *Oracy group discussion deadline: to be completed by October half-term*
- *Overall Unit 1 deadline: March 2023 (group discussions and individual presentations)*
- *Unit 2 and 3 Examinations: June 2023 (exact dates to be released by WJEC)*



# Student Revision and Study Tips

---

- **Know where to look!** All English teachers have uploaded revision materials to their class teams in a folder called 'Revision'. English Language support sessions run every Wednesday after school.
- **Read as much as you can!** Practice your skimming and scanning skills by reading a range of texts and looking for the key information – anything from online articles to novels!
- **Know your deadlines!** Keep an eye on the assignments set for you on Teams by your English teacher and make sure all classwork and homework deadlines are met. Key dates have been added above.
- **Get skilled up!** Make sure you are familiar with key exam skills and question types. If you hear words like 'summarise' and 'compare' you should know exactly what to do.





# *Useful Online Resources*

---

**WJEC Exam Walk-Through**

[Resource WJEC Educational Resources Website](#)

**GCSE Pod**

(Use your school Office 365 login)

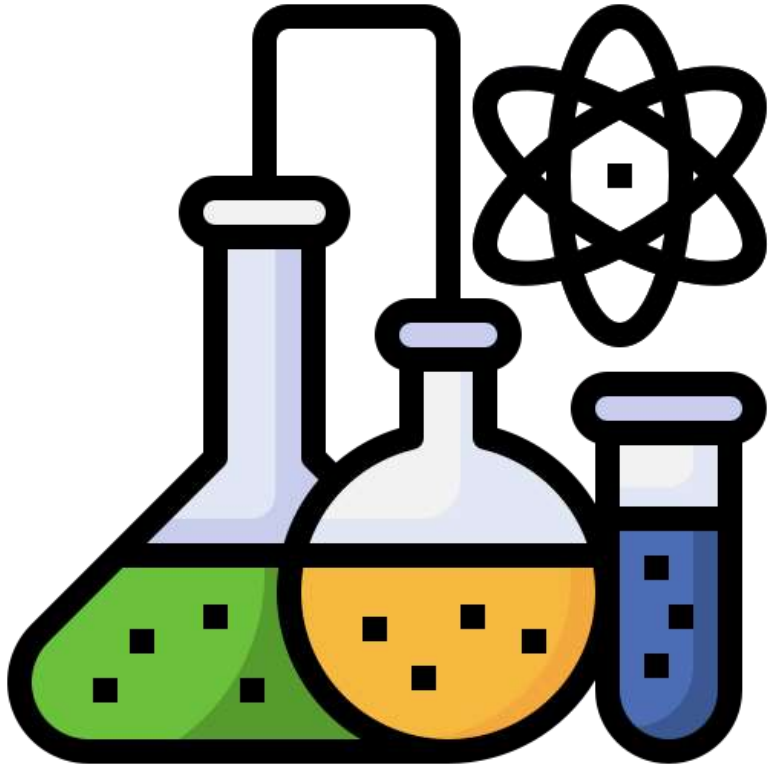
[GCSEPod](#)

**GCSE Bitesize**

(No login required)

[GCSE English Language - WJEC - BBC Bitesize](#)





*Year 11 –  
GCSE  
Science*



# *Biology/Chemistry/Physics*

Unit	Percentage of course	When assessed
One – Written Examination	45	Summer exam series of Year 10 Resits available summer exam series of year 11
Two – Written Examination	45	Summer exam series of Year 11
Three – Practical Assessment	10	First half of Spring Term of year 11

*Further detail  
on individual  
units is  
available in  
your booklet*



# Single Award Applied

Unit	Percentage of course	When assessed
One – Written examination	40	Summer exam series of Year 10 Resits available summer exam series of year 11
Two – Written examination	30	Summer exam series of Year 11
Three – Task based assessment	20	Second half of Spring Term of year 10
Four - Practical Assessment	10	First half of Spring Term of year 11

*Further detail on individual units is available in your booklet*



*Resources  
from the  
WJEC*



# *WJEC Blended Learning Modules for all Subjects*

---



Search input field with magnifying glass icon

- Student Support
- Key dates & exam timetables
- Revision tips
- Revision Resources
- NEW Knowledge Organisers
- **NEW Blended Learning**
- Exam Walk Throughs
- NEW Bridging Resources
- Past papers
- Your wellbeing
- Results day
- Unhappy with your results?
- Malpractice



We have worked closely with practitioners across all four consortia to design and develop blended learning modules to support teachers and students.

See latest blended learning modules below.

### Applied Science

GCSE ▼

### Biology

Need Help?

- Unhappy with your results?
- Malpractice
- Replacement exam certificates
- Private candidates

## Biology

AS/A Level

GCSE

KS3-4 Bridging unit: Biology - Unit 1

Unit 1.1 Cells and movement across membranes

Unit 1.2 Respiration and respiratory system in humans

Unit 1.3 Digestion and the Digestive System in Humans

Unit 1.4 Circulatory systems in humans

Unit 1.6 Ecosystems, nutrient cycles and human impact on the environment

Unit 2.1 Classification and biodiversity

Unit 2.2 Cell division and stem cells

Unit 2.3 DNA and inheritance

Unit 2.4 Variation and Evolution

Unit 2.5 Response and Regulation

Unit 2.6 Kidneys and Homeostasis

Unit 2.7 Micro-organisms and their applications

Unit 2.8 Disease, Defence and Treatment

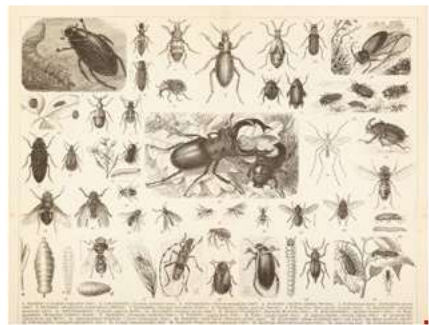
Click on the topic you would like to revise



Need Help?



## Resource



# GCSE Unit 2.1 Classification and biodiversity - Blended Learning

Biology  
KS4 >

This blended learning resource contains interactive self-study content covering GCSE Unit 2.1 Classification and biodiversity.

The resource is designed to complement traditional face to face teaching with an online learning pack that allows students to learn at their own pace.

It can be used as revision by students, as part of catch-up or for flipped learning.

It should not be seen as a way to deliver the content in a classroom setting and should always be blended with conventional methods.

### Information

Published: 07 October 2021  
Authors: - Sharon Goulden

### Related Resources

- Applied Science
- Geography
- Applied Science
- Applied Science
- Geography

student focused Variation, homeostasis and micro-organisms

### Files

[Open resource](#) ←

[Acknowledgements](#)

### Feedback

Not seeing what you want? Is there are problem with the files? Do you have a suggestion? Please give us feedback, we welcome all correspondence from our users.

name:

email:

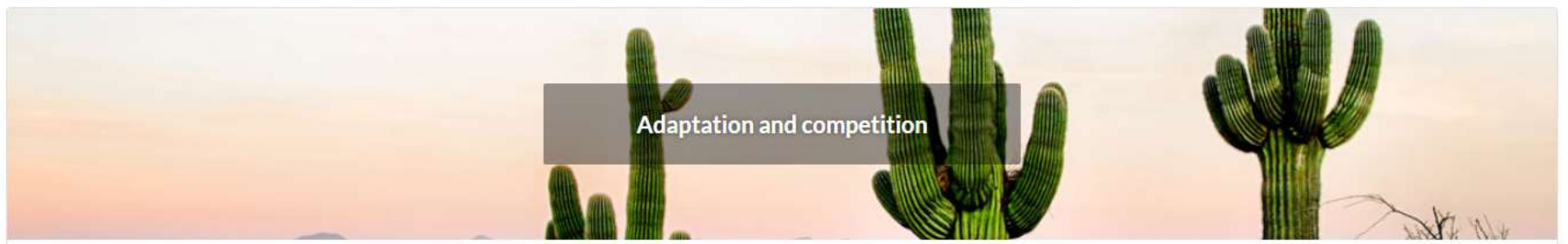
- Dashboard
- 1.0 Classification and scientific names 5
  - Lesson objectives
  - Classification of living things
  - The binomial system and scientific names
  - Past paper question
  - How did you do?
- 2.0 Adaptation and competition 4
- 3.0 Biodiversity and biological control 5
- 4.0 Sampling the environment 5

# Classification and Biodiversity

GCSE Biology



You haven't started this lesson yet. → [Begin](#)



You haven't started this lesson yet. [Begin](#)



# *WJEC Question Bank*

---



WJEC Home > Question Bank

- Question Bank
- Question Bank FAQs
- Feedback

WJEC are currently creating a new and improved Question Bank which will offer users greater functionality. In the meantime the current system will remain available but we will not be uploading any new questions to the site.

Question Bank is a free tool which allows you to create practice question papers from thousands of WJEC past paper questions. Find the questions you need, add them to your paper and export your paper with accompanying mark scheme and examiner's comments as a PDF ready to use in the classroom.

[Question Search](#)



**GCSE** GCE AS/A Level

- GCSE Applied Science
- GCSE Biology
- GCSE Business Studies
- GCSE Chemistry
- GCSE Mathematics
- GCSE Food and Nutrition
- GCSE Physical Education
- GCSE Physics

[Need Help?](#)

Offering Eduqas qualifications? [Try Question Bank for Eduqas](#)



English | ?

Showing 8218 questions

Subjects  
Search for subjects...

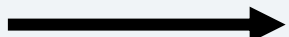
Levels  
Search for levels...

Series  
Search for series...

Language  
 Welsh  
 English 8218

Tier  
 Foundation 2668  
 Higher 5550

Prioritise by Tags  
Search for tags...



GCSE  
Can search for a specific series e.g. June 2019 or leave blank to access all

Can search for a specific topic

### Psychology 4 marks [+ Add](#)

GCE AS/A Higher Tier

0 3 Using an example, describe a matched pairs experimental design. [4]

229601 # 3 June 2018

ao1 as matched pairs unit 2 wjec

### History 36 marks [+ Add](#)

GCE AS/A Higher Tier

How far was government action **mainly responsible** for bringing about social reform in the period 1815-1848? [36]

123103 # 3b May 2013

op 3 social and economic issues unit 1

### Economics 1 mark [+ Add](#)

GCE AS/A Higher Tier

In the matrix below two firms A and B are selling a homogeneous product. They are both considering a pricing strategy unaware of the other firm's intentions and neither trusts each other. The profits each firm could make by selling at a price of £4 or £3 are shown in the matrix below.

	Firm B
Firm A	£4

852101 # 16 June 2017

My Paper

No questions have been added to your paper

[Preview Paper](#)



Offering Eduqas qualifications? [Try Question Bank for Eduqas](#)



English ?

Biology 300

Levels  
Search for levels...

GCSE 300

Series  
Search for series...

Language  
 Welsh

English 300

Tier  
 Foundation 145

Higher 155

Prioritise by Tags  
Search for tags...

genetics

1. (a) State what is meant by the following terms:  
(i) gene: [1]

343402 # 1 June 2019

genetics diagrams mutation tables

Biology 6 marks + Add

GCSE Foundation Tier

(a) (i) Gregor Mendel crossed purple flowered pea plants with white flowered pea plants. All the F1 generation were purple flowered. Show this cross by completing the Punnett square below. Use the letter D to represent the purple allele and the letter d to represent the white allele. [2]

446101 # 6 June 2016

genetics fractions percentages ratios

Biology 10 marks + Add

GCSE Higher Tier

2. Cystic Fibrosis (CF) is a serious medical condition which affects the lungs. It results from a mutation in the DNA of a single gene which gives rise to a recessive allele.

(a) Explain the meaning of the term *recessive allele*. [2]

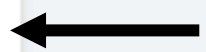
340302 # 2 June 2019

genetics drugs and therapies mutation

your paper  
Preview Paper



Click here to see the question



Click here to add to your paper

Showing 300 questions

Subjects

Search for subjects...

Biology 300

Levels

Search for levels...

GCSE 300

Series

Search for series...

Language

Welsh

English 300

Tier

Foundation 145

Higher 155

Prioritise by Tags

Search for tags...

genetics

### Biology

8 marks + Add

GCSE Higher Tier

1. (a) State what is meant by the following terms:  
(i) gene; [1]

343402 # 1 June 2019

genetics diagrams mutation tables

### Biology

6 marks - Remove

GCSE Foundation Tier

(a) (i) Gregor Mendel crossed purple flowered pea plants with white flowered pea plants. All the F1 generation were purple flowered. Show this cross by completing the Punnett square below. Use the letter D to represent the purple allele and the letter d to represent the white allele. [2]

446101 # 6 June 2016

genetics fractions percentages ratios

### Biology

10 marks - Remove

GCSE Higher Tier

2. Cystic Fibrosis (CF) is a serious medical condition which affects the lungs. It results from a mutation in the DNA of a single gene which gives rise to a recessive allele.

My Paper

- 4 questions
- 28 marks
- 1 subject
- Approx. 28 minutes

[Clear all](#) Preview Paper





Offering Eduqas qualifications? [Try Question Bank for Eduqas](#)



Back to search

My Paper

Paper name: Biology

Questions

Drag a question to reorder or remove it from your paper

- #1 446101 Q.6 6
- #2 340302 Q.2 10
- #3 446102 Q.1 6
- #4 445101 Q.6 6

Drag a question here to remove it

Title Page

Biology

Question	Maximum Mark	Mark Awarded
#1	6	
#2	10	
#3	6	
#4	6	
<b>Total</b>	<b>28</b>	

created with WJEC CBAC Question Bank

Disclaimer: The questions in this revision paper have all been taken from actual examinations that have taken place. Whilst the questions are the property of WJEC, this revision paper was created using an online tool and WJEC take no responsibility for the content within it.

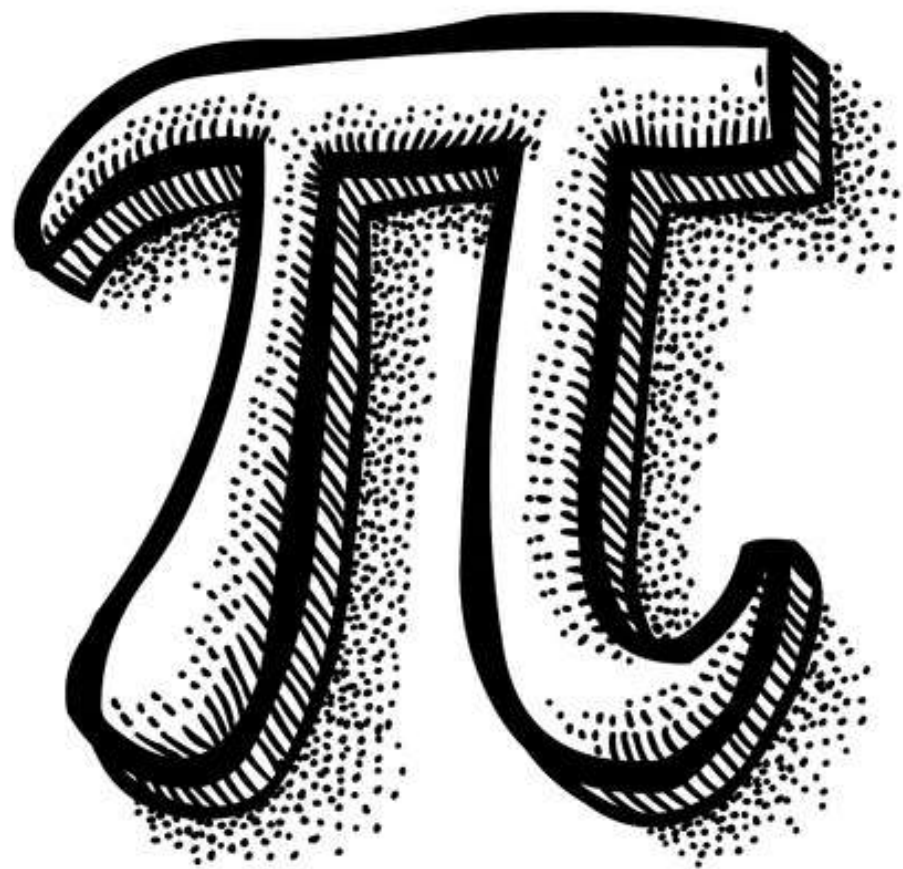
446101 Q.6 [Move Up] [Move Down] [Remove]

Export

- Title Page
- Questions
- Examiner Comments
- Marking Scheme

Print Save as PDF

#1 (a) (i) Gregor Mendel crossed purple flowered pea plants with white flowered pea plants. All the F1 generation were purple flowered. Show this cross by completing the



*Year 11 –  
GCSE  
Maths*



# Course Outline

---

## *Mathematics & Numeracy*

- *GCSE Mathematics builds on the progress made at the end of KS3 and extends to aspects of mathematics needed for progression to scientific, technical or further mathematical study.*
- *Learners can develop the skills needed to select and apply methods in both mathematical and real-world contexts.*
- *The course also enables learners to communicate mathematical information in a variety of forms, draw and justify conclusions based off their calculations and workings.*



# Course Outline continued...

---

## *Mathematics & Numeracy*

- *GCSE Numeracy will enable learners to develop knowledge, skills and understanding of mathematical and statistical methods required for everyday life.*
- *Pupils will benefit from being able to acquire and use strategies for problem solving and modelling in context.*
- *As well as being able to interpret different mathematical results and communicate information in a variety of forms.*

# Course Outline

## What is Assessed?

GCSE	Mathematics – Numeracy	Mathematics	
<b>Content</b>	Number, Measure and Statistics plus <u>some aspects of</u> Algebra, Geometry and Probability	<u>All</u> the content of GCSE Mathematics - Numeracy	<u>Additional</u> Algebra, Geometry and Probability
<b>Assessment focus</b>	The application of the above content in context	–	The application of the <u>above content</u> in context
		Procedural skills in situations that are context-free or involve minimal context for <u>all</u> content	



# Key Dates

---

## *External WJEC Examinations & Mock Assessments*

**Key Dates 2022-2023:** The following dates indicate actual external GCSE examinations, as well important PPE (Mock Assessments to indicate progression and possible required intervention):

- GCSE Mathematics: **External WJEC – May/June 2023** (Specific dates to be communicated)
- GCSE Mathematics Numeracy: **External WJEC – May/June 2023** (Specific dates to be communicated)
- GCSE Maths: Internal Mock- Week beginning 5<sup>th</sup> December.
- GCSE Maths & Numeracy: Internal Mock – Week beginning 13<sup>th</sup> February.

# Revision Materials And Resources

## Mathematics & Numeracy



WJEC Question Bank



Maths DIY



Corbett Maths



Mathematics - Youtube

Revision Resource	Website Address
WJEC Question Bank	<a href="https://questionbank.wjec.co.uk/">https://questionbank.wjec.co.uk/</a>
Maths DIY	<a href="https://www.mathsdiy.com/">https://www.mathsdiy.com/</a>
Corbett Maths	<a href="https://corbettmaths.com/">https://corbettmaths.com/</a>
Maesteg Maths YouTube	<a href="https://www.youtube.com/channel/UCt5Dd23lLz7Hl2fZn7C5BGQ">https://www.youtube.com/channel/UCt5Dd23lLz7Hl2fZn7C5BGQ</a>

*Your pack will contain QR codes which you can scan to take you to the websites and resources we encourage all learners to familiarise themselves with and use to consolidate their own learning.*

*These QR codes will be attached to pupils' own revision packs which will be distributed shortly.*



# Investing Time In Independent Learning

## My Maths

Online homework Percentages of amounts 3 Maesteg School Nick Howells Video help Menu

Q2 - Percentages greater than 100  
Convert these percentages to fractions. Simplify your answers.

150

33 9  
44 8 [4]

✓ Marks saved

✓ Homework completed

Well done, you scored 53%

See summary

Q2 - Percentages greater than 100  
The  
An orange contains 175% of this amount.  
How much vitamin C does an orange contain? 6 mg 52.5 [1]  
You have scored 4 out of 9 for this question.



You scored 53%

Finish

Question	Score	Score %
Q1 - <u>Percentages less than 100</u>	$\frac{6}{10}$	60%
Q2 - <u>Percentages greater than 100</u>	$\frac{4}{9}$	44%

**Weekly tasks to be completed, allows pupils to consolidate learning from in class.**

**Pupils have instant feedback and can have as many attempts as they want to improve on previous scores.**



# Hints and Tips

---

## Mathematics & Numeracy

- *For pupils to be successful, it is going to be a team effort!*
- *Teachers, household and most importantly the pupils themselves.*
- *Investment in independent learning. Investing time in consolidating key mathematical concepts and topics.*
- *Pupils will have access to weekly revision sessions.*
- *Ensure to complete set tasks on My Maths (or past paper questions) for homework.*
- *Access resources available: WJEC Question Bank, Corbett Maths and Maesteg YouTube Maths Chanel.*
- *Prepare for mock assessments in same fashion as actual exams. Invest time to consolidate learning and access past paper questions linked to recently covered topics.*
- *We want pupils to have a stress-free approach to their final exams. This can happen through a steady consistent and mature approach to learning.*

*“The more I practice,  
the luckier I get”*

*Gary Player:  
160 Professional Wins  
9 Major  
Championships*

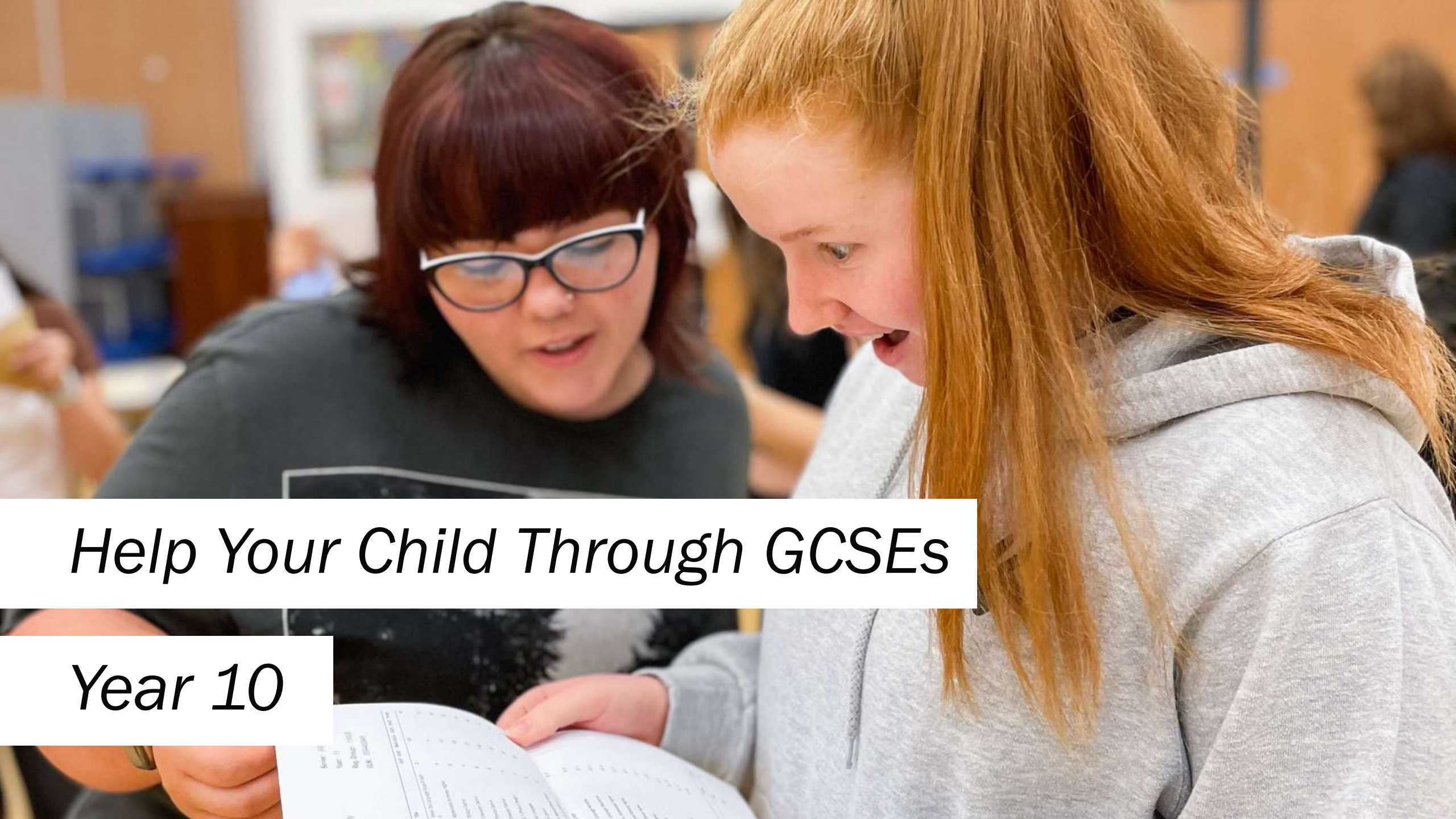
---



YSGOL  
MAESTEG







*Help Your Child Through GCSEs*

*Year 10*



# *Miss Hopkins-Weaver - Intro*

---

- *Wellbeing*
- *Teams & Blended Learning*
- *Homework*
- *Chromebooks*
- *Pre-Public Examinations – Majority at the end of the year. Wb 19th June. Others Spread throughout the year in line with external exams. Dates in booklets.*
- *Tutors*
- *Community Drop-In every Wednesday 12pm-2pm in Caerau Community Centre with Mrs. Alison Davies (07813 956115)*
- *Make a Difference in Education - MADE TRAINING*



wjec  
cbac

*Year 10 –  
GCSE English  
Literature*



# Course Overview

---

GCSE English Literature provides opportunities for pupils to read literature that will fire their imagination.

Pupils will read prose, drama and poetry from different centuries and genres, while developing a love of reading widely and for pleasure.

## 2 x 2-hour examinations

**Unit 1. : Different Cultures and Poetry**  
(Of Mice and Men) **35%**

**Unit 2: Contemporary drama and literary heritage**  
(Blood Brothers & A Christmas Carol) **40%**

## Non-Examination Assessment

**Unit 3: Non-examination Assessment.**  
Shakespeare and Welsh poetry  
(Romeo & Juliet) **25%**





# Key Dates

---

- *Welsh poetry comparison deadline: to be completed by October half-term*
- *English only Parents Evening: 1st December*
- *Unit 1 Exam: 11<sup>th</sup> January (Of Mice and Men & Unseen Poetry).*
- *Overall Unit 3 deadline: March 2023*
- *Unit 1 (re-sit) and 2 Examinations: June 2023 (exact dates to be released by WJEC) Blood Brothers & A Christmas Carol*

# Student Revision and Study Tips

---

- **Know where to look!** *Of Mice and Men* was first studied in Year 9. All resources and work completed last year will make good revision resources to support study in Year 10 . All pupils have been given revision booklets this year. English Literature support sessions run every Wednesday after school.
- **Know your texts!** Ensure you produce character files and learn a bank of key quotes from each set texts. A wide range of online support is available for all our set texts- some links are below. For Drama like *Blood Brothers* students will have the opportunity to watch this live in a theatre setting.



# *Student Revision and Study Tips*

---

- ***Know your deadlines!** Keep an eye on the assignments set for you on Teams by your English teacher and make sure all classwork and homework deadlines are met. Key dates have been added above.*
- ***Get skilled up!** Make sure you are familiar with key exam skills and question types. Extract, essay and comparison question all require a specific approach ensure you feel confident about applying the right skills*



# *USEFUL ONLINE RESOURCES*

---

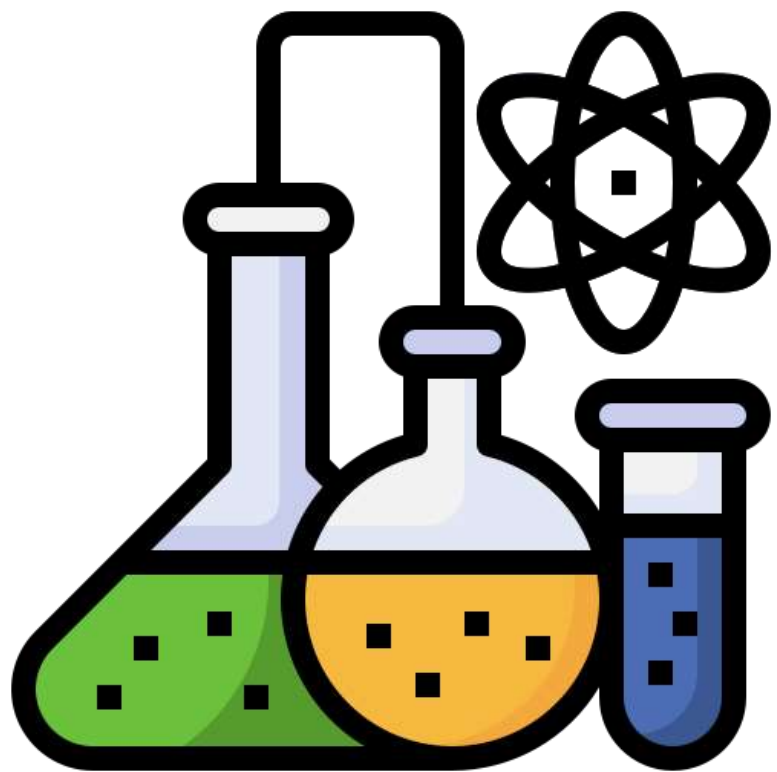
**WJEC Exam Walk-Through**

[Resource WJEC Educational Resources Website](#)

**GCSE Pod**

(Use your school Office 365 login)

[GCSEPod](#)



*Year 10 –  
GCSE  
Science*

# *Biology/Chemistry/Physics*

Unit	Percentage of course	When assessed
One – Written examination	45	Summer exam series of Year 10 (PPE week beginning 13th February) Resits available summer exam series of year 11
Two – Written examination	45	Summer exam series of Year 11
Three – Practical Assessment	10	First half of Spring Term of year 11



# Single Award Applied

Unit	Percentage of course	When assessed
One – Written examination	40	Summer exam series of Year 10 Resits available summer exam series of year 11 (PPE week beginning 13th February)
Two – Written examination	30	Summer exam series of Year 11
Three – Task based assessment	20	Second half of Spring Term of year 10
Four - Practical Assessment	10	First half of Spring Term of year 11





*Resources  
from the  
WJEC*



# *WJEC Blended Learning Modules for all Subjects*

---



Search

- Student Support
- Key dates & exam timetables
- Revision tips
- Revision Resources
- NEW Knowledge Organisers
- **NEW Blended Learning**
- Exam Walk Throughs
- NEW Bridging Resources
- Past papers
- Your wellbeing
- Results day
- Unhappy with your results?
- Malpractice



We have worked closely with practitioners across all four consortia to design and develop blended learning modules to support teachers and students.

See latest blended learning modules below.

### Applied Science

GCSE

### Biology

Need Help?

- Unhappy with your results?
- Malpractice
- Replacement exam certificates
- Private candidates

## Biology

AS/A Level

GCSE

KS3-4 Bridging unit: Biology - Unit 1

Unit 1.1 Cells and movement across membranes

Unit 1.2 Respiration and respiratory system in humans

Unit 1.3 Digestion and the Digestive System in Humans

Unit 1.4 Circulatory systems in humans

Unit 1.6 Ecosystems, nutrient cycles and human impact on the environment

Unit 2.1 Classification and biodiversity

Unit 2.2 Cell division and stem cells

Unit 2.3 DNA and inheritance

Unit 2.4 Variation and Evolution

Unit 2.5 Response and Regulation

Unit 2.6 Kidneys and Homeostasis

Unit 2.7 Micro-organisms and their applications

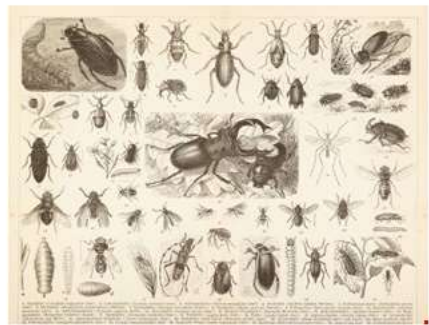
Unit 2.8 Disease, Defence and Treatment

Click on the topic you would like to revise



Need Help?

## Resource



# GCSE Unit 2.1 Classification and biodiversity - Blended Learning

Biology  
KS4 >

This blended learning resource contains interactive self-study content covering GCSE Unit 2.1 Classification and biodiversity.

The resource is designed to complement traditional face to face teaching with an online learning pack that allows students to learn at their own pace.

It can be used as revision by students, as part of catch-up or for flipped learning.

It should not be seen as a way to deliver the content in a classroom setting and should always be blended with conventional methods.

### Information

Published: 07 October 2021  
Authors: - Sharon Goulden

### Related Resources

- Applied Science
- Geography
- Applied Science
- Applied Science
- Geography

student focused Variation, homeostasis and micro-organisms

### Files

[Open resource](#) ←

[Acknowledgements](#)

### Feedback

Not seeing what you want? Is there are problem with the files? Do you have a suggestion? Please give us feedback, we welcome all correspondence from our users.

name:

email:



- Dashboard
- 1.0 Classification and scientific names 5
  - Lesson objectives
  - Classification of living things
  - The binomial system and scientific names
  - Past paper question
  - How did you do?
- 2.0 Adaptation and competition 4
- 3.0 Biodiversity and biological control 5
- 4.0 Sampling the environment 5

# Classification and Biodiversity

GCSE Biology



You haven't started this lesson yet. → [Begin](#)



You haven't started this lesson yet. [Begin](#)



# *WJEC Question Bank*

---





WJEC Home > Question Bank

- Question Bank
- Question Bank FAQs
- Feedback

WJEC are currently creating a new and improved Question Bank which will offer users greater functionality. In the meantime the current system will remain available but we will not be uploading any new questions to the site.

Question Bank is a free tool which allows you to create practice question papers from thousands of WJEC past paper questions. Find the questions you need, add them to your paper and export your paper with accompanying mark scheme and examiner's comments as a PDF ready to use in the classroom.

[Question Search](#)



**GCSE** GCE AS/A Level

- GCSE Applied Science
- GCSE Biology
- GCSE Business Studies
- GCSE Chemistry
- GCSE Mathematics
- GCSE Food and Nutrition
- GCSE Physical Education
- GCSE Physics

[Need Help?](#)

Offering Eduqas qualifications? [Try Question Bank for Eduqas](#)



English | ?

Showing 8218 questions

Subjects  
Search for subjects...

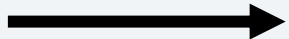
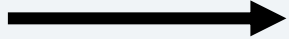
Levels  
Search for levels...

Series  
Search for series...

Language  
 Welsh  
 English 8218

Tier  
 Foundation 2668  
 Higher 5550

Prioritise by Tags  
Search for tags...



GCSE  
Can search for a specific series e.g. June 2019 or leave blank to access all

Can search for a specific topic

### Psychology

4 marks + Add

GCE AS/A Higher Tier

0 3 Using an example, describe a matched pairs experimental design. [4]

229601 # 3 June 2018

ao1 as matched pairs unit 2 wjec

### History

36 marks + Add

GCE AS/A Higher Tier

How far was government action **mainly responsible** for bringing about social reform in the period 1815-1848? [36]

123103 # 3b May 2013

op 3 social and economic issues unit 1

### Economics

1 mark + Add

GCE AS/A Higher Tier

In the matrix below two firms A and B are selling a homogeneous product. They are both considering a pricing strategy unaware of the other firm's intentions and neither trusts each other. The profits each firm could make by selling at a price of £4 or £3 are shown in the matrix below.

	Firm B
£4	1, 4
£3	4, 1

852101 # 16 June 2017

My Paper

No questions have been added to your paper

Preview Paper

Offering Eduqas qualifications? [Try Question Bank for Eduqas](#)



English ?

Biology 300

Levels  
Search for levels...

GCSE 300

Series  
Search for series...

Language  
 Welsh  
 English 300

Tier  
 Foundation 145  
 Higher 155

Prioritise by Tags  
Search for tags...

genetics

1. (a) State what is meant by the following terms:  
(i) gene: [1]

343402 # 1 June 2019  
genetics diagrams mutation tables

Biology 6 marks + Add

GCSE Foundation Tier

(a) (i) Gregor Mendel crossed purple flowered pea plants with white flowered pea plants. All the F1 generation were purple flowered. Show this cross by completing the Punnett square below. Use the letter D to represent the purple allele and the letter d to represent the white allele. [2]

446101 # 6 June 2016  
genetics fractions percentages ratios

Biology 10 marks + Add

GCSE Higher Tier

2. Cystic Fibrosis (CF) is a serious medical condition which affects the lungs. It results from a mutation in the DNA of a single gene which gives rise to a recessive allele.

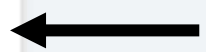
(a) Explain the meaning of the term *recessive allele*. [2]

340302 # 2 June 2019  
genetics drugs and therapies mutation

your paper  
Preview Paper



Click here to see the question



Click here to add to your paper



Showing 300 questions

Subjects

Search for subjects...

Biology 300

Levels

Search for levels...

GCSE 300

Series

Search for series...

Language

Welsh

English 300

Tier

Foundation 145

Higher 155

Prioritise by Tags

Search for tags...

genetics

Biology 8 marks + Add

GCSE Higher Tier

1. (a) State what is meant by the following terms:

(i) gene; [1]

343402 # 1 June 2019

genetics diagrams mutation tables

Biology 6 marks - Remove

GCSE Foundation Tier

(a) (i) Gregor Mendel crossed purple flowered pea plants with white flowered pea plants. All the F1 generation were purple flowered. Show this cross by completing the Punnett square below. Use the letter D to represent the purple allele and the letter d to represent the white allele. [2]

446101 # 6 June 2016

genetics fractions percentages ratios

Biology 10 marks - Remove

GCSE Higher Tier

2. Cystic Fibrosis (CF) is a serious medical condition which affects the lungs. It results from a mutation in the DNA of a single gene which gives rise to a recessive allele.

(a) Explain the meaning of the term recessive allele. [2]

My Paper

- 4 questions
- 28 marks
- 1 subject
- Approx. 28 minutes

[Clear all](#) [Preview Paper](#)



Offering Eduqas qualifications? [Try Question Bank for Eduqas](#)



Back to search

My Paper

Paper name: Biology

Questions

Drag a question to reorder or remove it from your paper

- #1 446101 Q.6 6
- #2 340302 Q.2 10
- #3 446102 Q.1 6
- #4 445101 Q.6 6

Drag a question here to remove it

Title Page

Biology

Question	Maximum Mark	Mark Awarded
#1	6	
#2	10	
#3	6	
#4	6	
<b>Total</b>	<b>28</b>	



Disclaimer: The questions in this revision paper have all been taken from actual examinations that have taken place. Whilst the questions are the property of WJEC, this revision paper was created using an online tool and WJEC take no responsibility for the content within it.

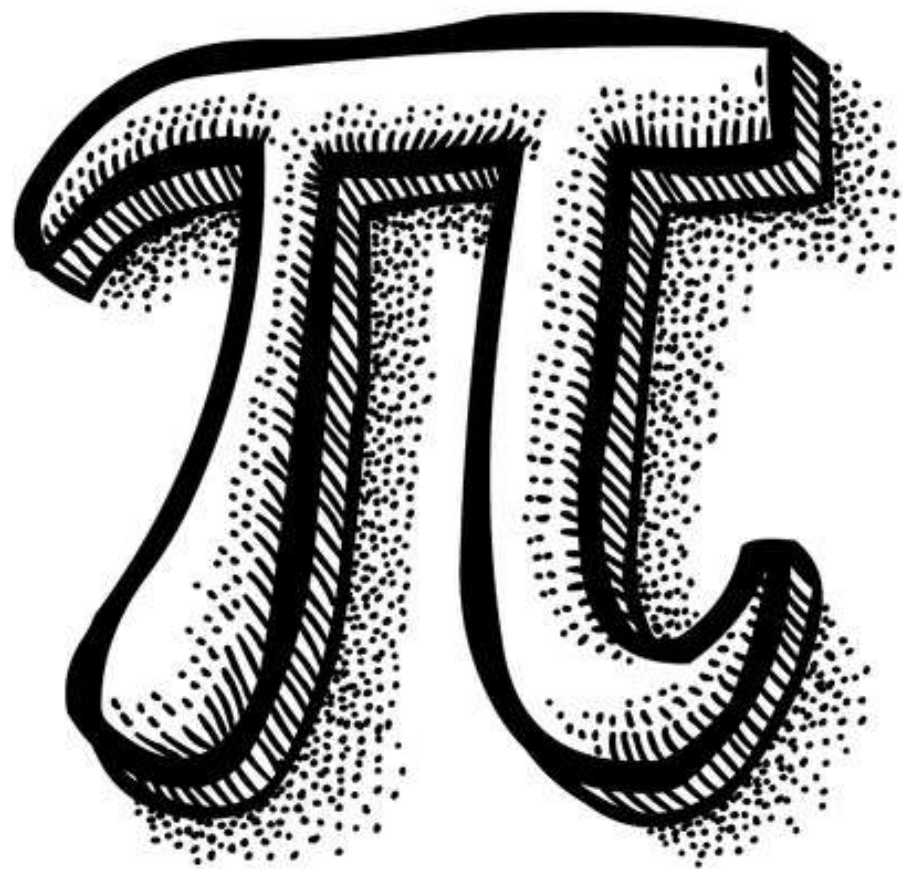
446101 Q.6 Move Up Move Down Remove

Export

- Title Page
- Questions
- Examiner Comments
- Marking Scheme

Print Save as PDF

#1 (a) (i) Gregor Mendel crossed purple flowered pea plants with white flowered pea plants. All the F1 generation were purple flowered. Show this cross by completing the



*Year 10 –  
GCSE  
Maths*





# Course Outline

---

## *Mathematics & Numeracy*

- *GCSE Mathematics builds on the progress made at the end of KS3 and extends to aspects of mathematics needed for progression to scientific, technical or further mathematical study.*
- *Learners can develop the skills needed to select and apply methods in both mathematical and real-world contexts.*
- *The course also enables learners to communicate mathematical information in a variety of forms, draw and justify conclusions based off their calculations and workings.*



# Course Outline continued...

---

## *Mathematics & Numeracy*

- *GCSE Numeracy will enable learners to develop knowledge, skills and understanding of mathematical and statistical methods required for everyday life.*
- *Pupils will benefit from being able to acquire and use strategies for problem solving and modelling in context.*
- *As well as being able to interpret different mathematical results and communicate information in a variety of forms.*

# Course Outline

## What is Assessed?

GCSE	Mathematics – Numeracy	Mathematics	
<b>Content</b>	Number, Measure and Statistics plus <u>some aspects of</u> Algebra, Geometry and Probability	<u>All</u> the content of GCSE Mathematics - Numeracy	<u>Additional</u> Algebra, Geometry and Probability
<b>Assessment focus</b>	The application of the above content in context	–	The application of the <u>above</u> content in context
		Procedural skills in situations that are context-free or involve minimal context for <u>all</u> content	



# Key Dates

---

## *External WJEC Examinations & Mock Assessments*

**Key Dates 2022-2023:** The following dates indicate whole year group internal mock assessments for current Year 10. It should be noted that the earliest that the current Year 10's will sit a mathematics GCSE is planned to be November 2023:

- **GCSE Mathematics: Internal Mock – Week Commencing 19<sup>th</sup> & 26<sup>th</sup> June 2023**
- **GCSE Mathematics Numeracy: Internal Mock- Week Commencing 19<sup>th</sup> & 26<sup>th</sup> June 2023**
- **Pupils will also be assessed at the end of every half term with in -class assessments to help measure progress and identify any areas of support.**

# Revision Materials And Resources

## Mathematics & Numeracy



WJEC Question Bank



Maths DIY



Corbett Maths



Mathematics - Youtube

Revision Resource	Website Address
WJEC Question Bank	<a href="https://questionbank.wjec.co.uk/">https://questionbank.wjec.co.uk/</a>
Maths DIY	<a href="https://www.mathsdiy.com/">https://www.mathsdiy.com/</a>
Corbett Maths	<a href="https://corbettmaths.com/">https://corbettmaths.com/</a>
Maesteg Maths YouTube	<a href="https://www.youtube.com/channel/UCt5Dd23lLz7Hl2fZn7C5BGQ">https://www.youtube.com/channel/UCt5Dd23lLz7Hl2fZn7C5BGQ</a>

*Your pack will contain QR codes which you can scan to take you to the websites and resources we encourage all learners to familiarise themselves with and use to consolidate their own learning.*

*These QR codes will be attached to pupils' own revision packs which will be distributed shortly.*

# Investing Time In Independent Learning

## My Maths

Online homework Percentages of amounts 3 Maesteg School Nick Howells Video help Menu

Q2 - Percentages greater than 100  
Convert these percentages to fractions. Simplify your answers.

150

33 9  
44 8 [4]

✓ Marks saved

✓ Homework completed

Well done, you scored 53%

See summary

Q2 - Percentages greater than 100  
The  
An orange contains 175% of this amount.  
How much vitamin C does an orange contain? 6 mg 52.5 [1]  
You have scored 4 out of 9 for this question.



You scored 53%

Finish

Question	Score	Score %
Q1 - <u>Percentages less than 100</u>	$\frac{6}{10}$	60%
Q2 - <u>Percentages greater than 100</u>	$\frac{4}{9}$	44%

**Weekly tasks to be completed, allows pupils to consolidate learning from in class.**

**Pupils have instant feedback and can have as many attempts as they want to improve on previous scores.**



# Hints and Tips

---

## Mathematics & Numeracy

- *For pupils to be successful, it is going to be a team effort!*
- *Teachers, household and most importantly the pupils themselves.*
- *Investment in independent learning. Investing time in consolidating key mathematical concepts and topics.*
- *Pupils will have access to weekly revision sessions.*
- *Ensure to complete set tasks on My Maths (or past paper questions) for homework.*
- *Access resources available: WJEC Question Bank, Corbett Maths and Maesteg YouTube Maths Chanel.*
- *Prepare for mock assessments in same fashion as actual exams. Invest time to consolidate learning and access past paper questions linked to recently covered topics.*
- *We want pupils to have a stress-free approach to their final exams. This can happen through a steady consistent and mature approach to learning.*



*“The more I practice,  
the luckier I get”*

*Gary Player:  
160 Professional Wins  
9 Major  
Championships*

---



YSGOL  
MAESTEG

